

ALLCHURCHES TRUST LIMITED

**2016 STRATEGIC REPORT
WITH SUPPLEMENTARY MATERIAL**

As the owner of an ethical and successful financial services group, our vision is to deliver steadily growing support to churches and other charities, for the greater good of all.

Table of Contents

Page	Contents
3	About us
4	Explanation of terms
5	Reference and administrative details
6	Chairman's Report
9	Strategic Report
34	Trustees' Report
40	Charity statement of financial activities (including an income and expenditure account)
41	Charity balance sheet
42	Charity statement of cash flows
43	Consolidated statement of financial activities (including an income and expenditure account)
45	Consolidated balance sheet
46	Charitable giving (unaudited)

This strategic report with supplementary information is only part of the charity's annual report and accounts. It does not contain sufficient information to allow for as full an understanding of the results of Allchurches Trust Limited and its trading subsidiaries and the state of affairs of the charity as would be provided by the full annual report and accounts.

Notes to the financial statements are not included in this statement, but are presented in the full annual report and accounts.

The auditor's report on the full annual report and accounts was unqualified. The auditor's statement relating to the consistency of the trustees' annual report and strategic report with the accounts was unqualified.

For further information copies of the full annual accounts can be obtained, free of charge, from the company secretary at the registered office on page 5 of this statement.

Allchurches Trust Limited

About us

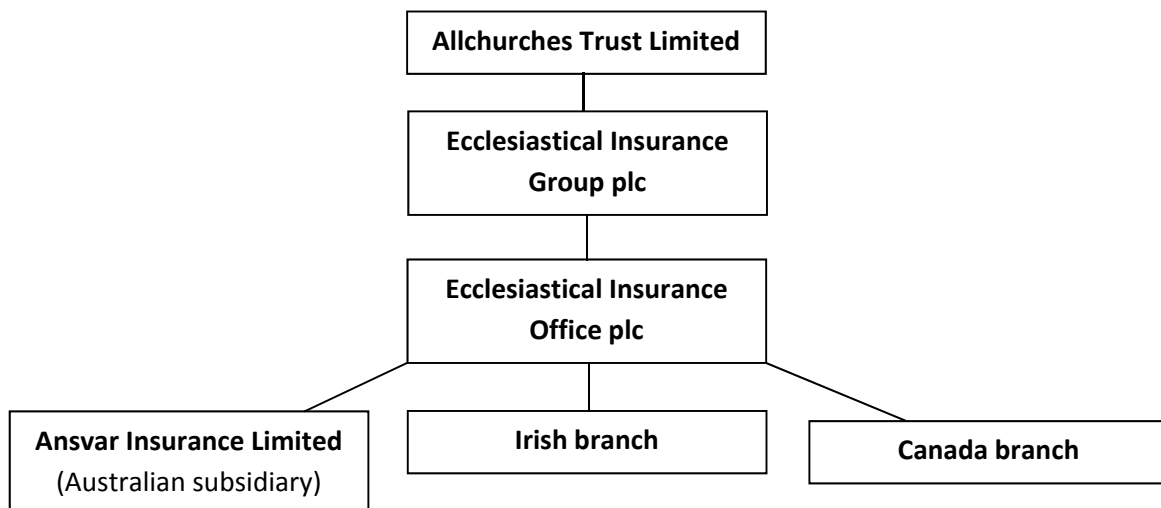
Allchurches Trust Limited (the Trust or the charity) was established in 1972. It is a registered charity that seeks to promote the Christian religion, providing grants to Anglican churches, churches of other denominations and the Christian community with an emphasis on heritage, care and the community.

The Trust is managed by the Board of trustees, who are also the directors of the charitable company for Companies Act purposes. The Trust is completely independent of the Church of England though, because of its Christian aims, some of its trustees and members are leading figures in the Church of England.

The Trust receives the majority of its income from the companies it owns, not from public donations. It is the owner of the Ecclesiastical Insurance Group plc (EIG plc) which in turn owns Ecclesiastical Insurance Office plc (EIO plc), an independent financial services company, regulated by the Financial Conduct Authority and Prudential Regulation Authority. EIO plc insures heritage buildings, charities, schools, churches and other faith buildings and provides a range of specialist investment management, broking and advisory services.

Structure

A full list of the Trust's related undertakings is presented in note 44 to the financial statements. A simplified organogram is shown below.



Allchurches Trust Limited

Explanation of terms

Throughout the annual report the following terms are used as defined below:

Ecclesiastical	The abbreviation for the legal entities which together comprise the Ecclesiastical Insurance group
Ecclesiastical Insurance group	The overall term for the Ecclesiastical business which includes Ecclesiastical Insurance Group plc and its direct and indirectly-owned subsidiaries
EIG plc	Ecclesiastical Insurance Group plc, the direct subsidiary of Allchurches Trust Limited
EIO plc	Ecclesiastical Insurance Office plc, a direct subsidiary of EIG plc
The charity	Allchurches Trust Limited
The Trust	Allchurches Trust Limited

Allchurches Trust Limited

Reference and administrative details

Board of trustees	Sir Philip Mawer DLitt, LLD, Hon FIA <i>Chairman</i> Michael Arlington BSc (Hon), FRAgS Timothy Carroll, BA, MBA, FCII The Venerable Annette J. Cooper BA, MA, CQSW Stephen C. Hudson BA (Hons), FCA Sir Laurie Magnus Bt Christopher Smith, Barrister Ms Denise P. Wilson OBE, BA (Hons), FCII
Company Secretary	Mrs Rachael J. Hall FCIS
Registered and Head Office	Beaufort House, Brunswick Road, Gloucester GL1 1JZ Tel: 01452 873 189
Company Registration Number	1043742
Charity Registration Number	263960
Auditor	Deloitte LLP, Chartered Accountants & Statutory Auditor, 2 New Street Square, London EC4A 3BZ
Bankers	National Westminster Bank plc, 21 Eastgate Street, Gloucester GL1 1NH
Solicitors	Farrer & Co, 66 Lincoln's Inn Fields, London WC2A 3LH
Investment Managers	EdenTree Investment Management Limited, 24 Monument Street, London EC3R 8AJ

Allchurches Trust Limited

Chairman's Report

Overview

This was another record year for the Trust. In March, EIO plc, our wholly owned subsidiary, announced that it had not merely achieved but surpassed its target of giving £50 million to good causes through the Trust over the three years 2014-16, an achievement subsequently celebrated at a very well-attended Service of Thanksgiving in Gloucester Cathedral. By the end of 2016, EIO plc's grants to the Trust during the year totalled £24 million. These sums enabled the Trust to increase the total of grants it awarded to churches, church heritage, schools, charities and communities from £11.7 million in 2015 to £13.2 million, a new record. They also enabled it, as the Trust seeks to diversify its assets, to grow its expendable capital endowment fund to reach almost £70 million at the year end.

Ecclesiastical Insurance group

As the Ecclesiastical Insurance group's (Ecclesiastical's) achievements indicate, it has continued its excellent progress in spite of difficult markets and wider economic uncertainties, such as those resulting from the Brexit vote. Ecclesiastical achieved a pre-tax profit of £85.8 million in 2016 and, while a good deal of this was the result of investment gains, the most pleasing element was the continuation of underwriting profitability, with the group combined operating ratio¹ standing at 89.8%. This was achieved in spite of a number of challenges, especially in Canada following the devastating Fort McMurray fire, the largest catastrophe in Canada's history. The Trust was delighted to be able to make a special grant of Can\$100,000 to the Anglican Church in Canada to help with community regeneration after the fire.

Our grants

The income we received from EIO plc enabled us to make record grants in 2016. Later in this report we give specific examples of some of the grants we made. We systematically uplift all of our grants to less advantaged parishes².

Among other developments during the year we:

- Increased our substantial grants to Anglican dioceses and cathedrals in the British Isles by 2.5%, a cumulative increase in these grants of 10% since the end of 2013. The grants to dioceses help parishes by reducing the financial burden which would otherwise fall (through the Parish Share or its equivalent) on their shoulders.
- Increased the total amount given directly in response to applications from parishes, cathedrals, schools and charities to £3.2 million, a rise of 33%.

¹ The combined operating ratio is used by Ecclesiastical as a measure of underwriting efficiency. The ratio expresses the total of net claims costs, commission and underwriting expenses as a percentage of net earned premium.

² As measured by the Church Urban Fund deprivation index.

Allchurches Trust Limited

- Granted £140,000 to help projects of strategic significance to the Church of England nationally.
- Gave £77,000 under a special programme to help churches install roof alarms to guard against the theft of lead. We introduced this special programme following a suggestion by a trustee of the Suffolk Historic Churches Preservation Trust and by 31 March 2017, when the programme closed, the total granted had reached over £275,000.
- Awarded grants totalling £493,000 to good causes in Ireland (both north and south of the border) and totalling £369,000 to Canada, the latter including a record grant of £300,000 spread over three years to the Yonge Street Mission to assist with community regeneration in Toronto. In addition, grants totalling AUS\$258,000 were awarded in Australia by EIO plc's subsidiary, Ansvar Insurance Limited.

Our policy of using some of our receipts to build the Trust's expendable capital endowment fund has begun to prove its worth, generating an additional £1.5 million of income in 2016 (2015: £0.8 million) which we used to help us make more grants. We embarked on this policy to diversify our asset base and so to reduce the risk to the charity (and therefore to the achievement of its objectives) which is unavoidably associated with owning a risk-based, insurance business. Our aim is to achieve over time a steady and sustainable increase in our grant-making, for the benefit of all our beneficiaries.

Our unrestricted fund stood at just under £16 million on 31 December 2016, reflecting our policy of keeping in reserve sufficient funds to cover all our future grants already committed, together with one year's worth of projected grants to dioceses and cathedrals and a balance to cover our projected spend in the first part of the ensuing year.

We keep the pattern of our grant-making under regular review. Having looked in detail in 2015 at the operation of our existing grant programmes, we intend, this year, to look longer term and more broadly at how we spend our money in support of our charitable objectives. We shall engage with our beneficiaries during this process and implement any resulting changes in a careful and measured way.

Donations received

We were delighted to receive donations totalling £7.6m from Methodist Insurance PLC into the Trust's unrestricted fund during the year. Whilst these donations form part of our unrestricted fund, it is our intention to take into consideration Methodist Insurance PLC's preference for these donations to be used to provide grants to the Methodist Connexion, Methodist districts and circuits and to individual Methodist churches. Applications for these grants (which are in addition to other applications the Trust receives for Methodist causes) are considered by the Trust's Methodist Grant-Giving Committee.

Our people

In February 2016 we welcomed the Revd Jeremy Noles as our third Grants Officer, covering the South East and East Anglia. In September, the Trust's Grants and Relationships Manager, Philip

Allchurches Trust Limited

Arundel, retired after six years outstanding service during which he greatly strengthened the professionalism and effectiveness of our grant-making arrangements, built the team of grants officers and introduced our online grant application system among many other initiatives. During the same month, we welcomed Janet Gough as our first executive director. Janet began the process of assisting the trustees to shape the next stage in the development of the Trust but in December 2016 decided to resign with effect from the end of the year. We are grateful for her contribution during her short time with us.

Among our trustees, we bade farewell in July 2016 to Michael Chamberlain FCA, OBE and the Rt. Revd Nigel Stock, both of them long-serving members of the Board. From their respective backgrounds and experience, each contributed selflessly and wisely to the work of the Trust and my colleagues and I are deeply grateful for all they did for us. In January 2016 we welcomed Stephen Hudson FCA as Michael Chamberlain's successor and, in April, Tim Carroll who succeeded David Christie as one of our two joint directors with EIG plc. We expect to announce a further appointment to the Board in 2017.

The past year has therefore been one of continued growth and development for the Trust. Much has been achieved; much remains to be done. As the Trust's resources increase, so does the complexity of the Trust's work. The challenges we face are, however, the result of success - the success of Ecclesiastical, its Board, its staff and its many loyal customers in building a first class company dedicated to serving the greater good, not least through the work of its charitable owner. As we face the challenges ahead, my colleagues and I - and above all our many beneficiaries - say a heartfelt thank you to them all.

Sir Philip Mawer, Chairman
25 April 2017

Allchurches Trust Limited

Strategic Report

Our purposes and activities

The purposes of the charity are:

- to promote the Christian religion; and
- to contribute to the funds of any charitable institutions, associations, funds or objects and to carry out any charitable purpose.

The vision that shapes our annual activities remains the promotion of the Christian faith through supporting the mission and work of dioceses and cathedrals and allocating our charitable giving in response to requests from Anglican churches, churches of other denominations, Christian communities and other charitable organisations.

The charity also has the general aim of assisting in areas of greatest need and encouraging the training and development of lay and ordained people as well as helping projects enabling evangelism and church growth.

In shaping our objectives for the year and planning our activities, the trustees have considered the Charity Commission's guidance on public benefit, including the guidance *Public Benefit: Running a Charity (PB2)*. The charity's income is derived from the gift aid it receives from its subsidiary company, EIO plc, and the investment income generated from the charity's capital endowment fund.

The objectives we have identified to help achieve the charity's aims in 2017 are to:

- Develop a new grants strategy, in consultation with key groups of beneficiaries, which continues to further the Trust's charitable objectives, in response to changing needs, and has the greatest possible beneficial impact on people's lives.
- Improve collaboration with public and other funders and delivery bodies to maximise that impact.
- Develop a communications strategy that supports delivery of the above.
- Review the Trust's investment policies (including its ethical investment approach) and associated arrangements to ensure they deliver maximum benefit to the Trust and therefore to beneficiaries.
- Ensure the successful implementation of new arrangements for allocating grants in Australia, Canada and Ireland.
- Successfully implement and monitor improved arrangements for ensuring the Trust assesses risk and audits its activities effectively.

Allchurches Trust Limited

To achieve these objectives a detailed programme of activities has been prepared which includes:

- a strategic review of our grants policy;
- developing relationships with funders and other bodies (e.g. through sponsoring joint programmes) to extend the reach and impact of the grants we make;
- developing our communications capacity and approach to raise our profile in support of our objectives;
- reviewing our current investment arrangements in the light of the growth of the expendable capital endowment fund;
- ensuring the effective delivery of the revised grant-making arrangements in Australia, Canada and Ireland; and
- ensuring that the recently formed Audit and Risk Committee is effective in its operation.

Allchurches Trust Limited

Achievements and Performance

We had a successful year during 2016 and made significant progress in meeting the objectives we had set to further the charity's aims.

The objectives we set during 2016 were to:

- Recruit and induct an executive director to lead the development of the charity's strategy.
- Develop, in discussion with Ecclesiastical, a longer-term communications strategy for the charity and agree a plan for its implementation, building on the interim arrangements already agreed by the Board.
- Implement the outcome of the Board's 2015 review of our charitable giving policies, keeping them under consideration as necessary, informed by the changing expectations and priorities of our potential beneficiaries.
- Consider the implications for the charity of Ecclesiastical's business plan for 2016-2018, in discussion with the company as necessary.
- Implement arrangements to distribute grants to Methodist beneficiaries.
- Continue to strengthen the effectiveness of the Trust and its Board in meeting the needs of beneficiaries.

Our performance against each objective is set out below.

Recruit and induct an executive director

With the assistance of external recruitment consultants, the trustees appointed their first executive director in September 2016. The new director embarked on an extensive induction programme to gain a thorough understanding of the charity and its beneficiaries and its relationship with its trading subsidiary, and began work on helping the trustees shape the future development of the Trust. However, the executive director subsequently decided to resign as at 31 December 2016. We shall seek to recruit a successor during 2017.

Develop a longer-term communications strategy

A communications consultant was appointed during the year, to review the Trust's current communications capacity and to commence work on the development of the longer term communications strategy, which will include a review of the Trust's brand. During the year, the infrastructure supporting the communications function was strengthened through the appointment of a media relations consultant, refreshing the Trust's website, the development of a stakeholder database, and undertaking the groundwork required to launch a social media presence in 2017. Work to achieve this objective will be continued in 2017.

Allchurches Trust Limited

Implement the outcome of the Board's 2015 review of our charitable giving policies

The review of our charitable giving policies began in 2014. The review considered the different charitable giving programmes of the Trust with a view to clarifying their scope, improving their operation, strengthening the support we give to those who are less advantaged, and so making them even more effective and relevant to the needs of beneficiaries. After careful consideration of the needs of different beneficiaries of the charity, the Board agreed new charitable giving policies during 2015. Some examples of improvements made as a result of the review include the development of a deprivation weighting to uplift grants in less advantaged parishes in England and Scotland (work has commenced on developing similar scales for Wales and Ireland); and the launch of our first thematic programme to assist churches with the installation of roof alarms to guard against the theft of lead.

The work on developing a new grants strategy, which features in our 2017 objectives, will build on the outcome of the earlier review whilst also taking into account current developments among our beneficiaries. Having reviewed the detailed operation of our existing programmes, our aim now is to stand back and consider how the overall pattern of our grant-making should develop in the next five to 10 years in order to assist the continued achievement of our charitable objectives.

Consider the implications for the charity of Ecclesiastical's business plan for 2016-2018

During the year, the trustees commissioned an independent review of the Trust's investment in the Ecclesiastical Insurance group (Ecclesiastical). The appointed consultant had been engaged to provide an independent review of the current positioning of EIG plc and its subsidiary companies, including EIO plc, and its near and medium term prospects. The report, which confirmed the continued potential of the Trust's principal investment, was considered by the investment committee and later by the trustees at an away day. Ecclesiastical was requested to respond to the findings of the report.

Most of the areas identified in the report were known to the EIG plc board and were being addressed as part of Ecclesiastical's 2020 strategic themes. The trustees confirmed that they were supportive of Ecclesiastical's new 2020 vision, strategic themes and initiatives and were broadly comfortable with Ecclesiastical's management response to the findings in the independent review.

The leadership and management of Ecclesiastical is the clear responsibility of EIG plc's own board and executive management team. In discharging its responsibilities as owner of EIG plc and as charitable trustee, the trustees will continue to keep themselves informed of Ecclesiastical's strategic development and progress as it unfolds over the next four years.

Allchurches Trust Limited

Implement arrangements to distribute grants to Methodist beneficiaries

The Trust received two donations from Methodist Insurance PLC during 2016 totalling £7.6m.

These donations form part of the Trust's unrestricted, undesignated funds. There is no legal restriction on how the donations can be used to further the Trust's charitable purposes and they have not been set aside to fund a specific project. However, the trustees intend to take into consideration Methodist Insurance PLC's preference for these donations to be used to fund grants to Methodist beneficiaries. Consequently, the trustees have established a separate committee of the Board, the Methodist Grant-Giving Committee, to consider grant applications which seek to enhance the mission and ministry of the Methodist Church in Great Britain and the Methodist Church in Ireland.

Continue to strengthen the effectiveness of the Trust and its Board in meeting the needs of beneficiaries

During the year, the Board agreed that, as mentioned earlier, it should embark on a wide-ranging review of the structure of its grant-making programmes over the next five to 10 year period. A sub-committee of the Board has been set up to lead the review with the assistance of an external consultant. The review will involve listening to the views of all trustees, key stakeholders and our present and potential future beneficiaries. In December, the Board agreed the big picture questions that the review will need to consider. This exercise will continue throughout 2017. We expect that the new grants programme will begin to come into effect during 2018.

The Board also continued to keep its own effectiveness under review, led by the Chairman and the Nominations Committee. One development of note was the establishment of a new Audit and Risk Committee, to strengthen the Trust's arrangements for assessing the key risks to the charity and for overseeing the proper control and expenditure of its increasing resources. The full and effective implementation of this new arrangement is one of the Board's objectives for 2017.

Allchurches Trust Limited

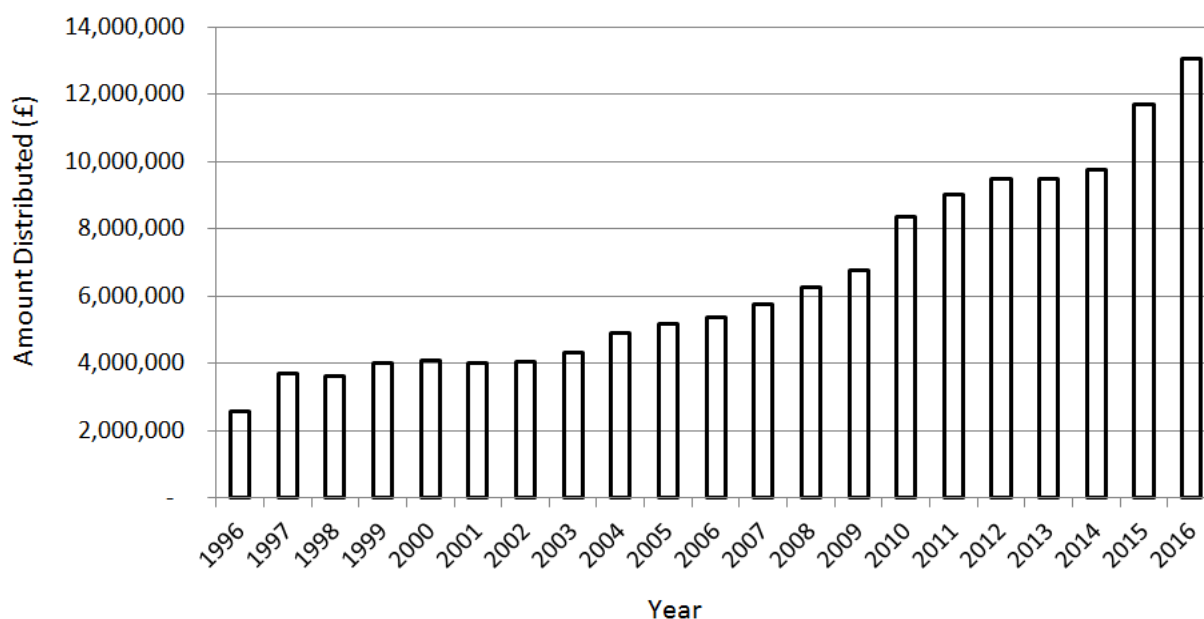
Charitable Giving

Thanks to the efforts of Ecclesiastical staff and the loyalty of its customers, we were again able to increase our financial support to churches and other charitable institutions significantly, with total charitable giving of £13.2m (2015: £11.7m).

The charitable giving of the Trust is shown in its statement of financial activities on page 40.

An analysis of the charitable giving is shown below and in note 6 to the financial statements.

We have steadily increased charitable giving to Anglican dioceses, cathedrals and parishes, and to other churches and charitable organisations since 1972, distributing £89.8m over the past 10 years.



Delivering public benefit with some examples

Some examples of recent charitable giving are listed below. These highlight some of the Trust's achievements and performance. Our beneficiaries have provided much positive feedback on the value and impact of the money we give.

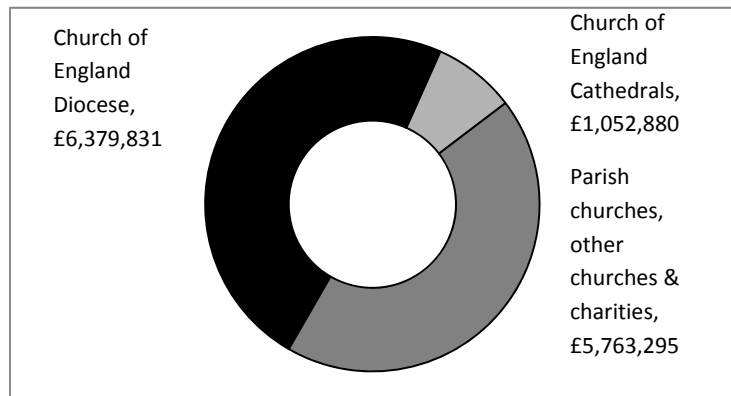
The £13.2m we gave away to good causes in 2016 breaks down like this:

	Number of grants	How much £
Church of England Dioceses	42	6,379,831
Church of England Cathedrals	45	1,052,880
Large Grants, above £6,250	122	2,647,434
Small Grants, up to £6,250	978	1,773,911
Special and Flagship Projects	24	1,209,600
Methodist Grant-Giving Committee grants	21	132,350
Total Grants	1,232	13,196,006

Allchurches Trust Limited

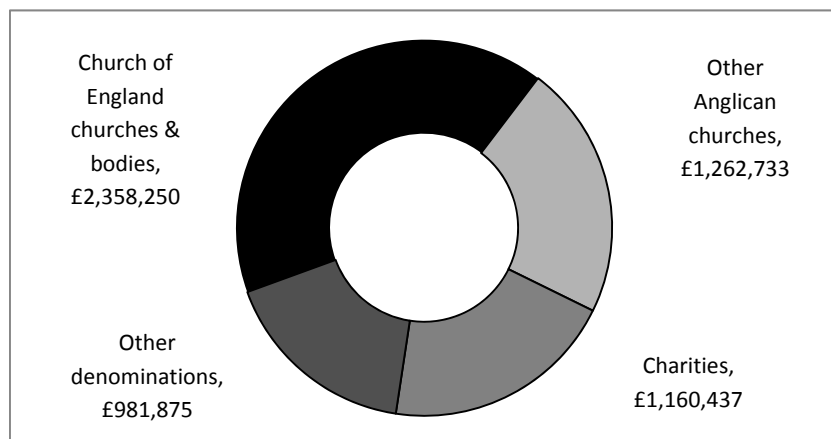
Grants to Church of England dioceses and cathedrals totalling £7,432,711 were used in many different ways including:

- Funding projects which encourage church growth and support mission
- Supporting the deployment of clergy, particularly in areas of greatest need
- Funding university chaplaincies and supporting ministry amongst children, young people and families
- Training of lay and ordained people, including pioneer ministers
- Repairs and maintenance of cathedral and parish church fabric
- Enabling cathedrals to maintain opening hours and avoid charging for entry
- Resourcing and developing music in cathedrals



Grants to Church of England parishes and bodies, churches of other denominations and charities totalling £5,763,295 were made and used for a variety of projects including:

- Building and restoration works
- Church community initiatives supporting mission and outreach
- School projects
- Projects helping people in need



Allchurches Trust Limited

Examples of charitable giving

“There must be an angel ...”

Eurythmics’ Dave Stewart and the Trust back rescue of Grade I church in Sunderland

Grade I listed Holy Trinity is an early Georgian architectural treasure, possibly the most significant building in the history of Old Sunderland. Located in one of the most economically deprived areas of England which also ranks in the top 3% of the most deprived neighbourhoods for educational attainment, Holy Trinity has been structurally unsafe and partly closed since 2014. Now cared for by the Churches Conservation Trust, it has become the subject of their latest big regeneration challenge.

Plans have been drawn up in conjunction with the local community, many of whom have deep family bonds with the church and fond personal memories of attending in the past. Holy Trinity will be transformed into The Canny Space, a conserved and renovated heritage landmark and a beacon of cultural renaissance in Sunderland.

The Trust is giving £129,000 to fund three local people to work for 12 months as apprentices on the restoration project, learning traditional building skills. Our grant addresses a recognised national shortage of people equipped with the skills to restore historic buildings and we’ll be improving local employment. A series of workshops and videos will allow the wider community to gain an insight into the skills the apprentices are acquiring.

Dave Stewart, originally from Sunderland and known worldwide as part of the Eurythmics, and now running a well-known production and management company, will act as creative director for an arts, music and culture programme that will run in the beautifully restored and sensitively adapted church interior. Its aim is to engage local people, inspire new talent and attract visitors to the east end of Sunderland as a place to be celebrated and enjoyed.

Three staff posts and university internships will be created and up to 90 volunteers recruited and trained, giving them transferable social and work skills.

Especially important for local people who remember the church while it was still run by the Church of England is the fact that Holy Trinity will remain consecrated, with up to six services a year.

Charity shops with a difference

How Carlisle Diocese is reaching people over the counter

Every year, the Trust gives a large proportion of its grants to Church of England dioceses for a great variety of good work. Carlisle Diocese is using some of its grant of £98,892 to run a network of second-hand shops across the city. Called “Opshops”, they not only resell 75 tonnes of goods each year but also provide a non-threatening environment for worship, fellowship, practical and spiritual support to individuals who would not cross the threshold of a church. The projected turnover for OpShops for 2016 is £200,000 based on 61 volunteers making 300 sales a day.

Allchurches Trust Limited

Big plans for Britain's smallest cathedral

A refurbishment project could regenerate an entire community

The Welsh city of St Asaph lies between Denbigh and the coastal resort of Rhyl. It is home to the smallest cathedral in Britain and is set on the banks of the River Elwy. It has been an important ecclesiastical centre for centuries, dating back to AD560 when a community was founded by the Scottish saint Kentigern, who left his disciple Asaph in charge when he returned to Scotland.

In 2012 there was elation when this small community was awarded city status to mark the Queen's Diamond Jubilee. The joy was short-lived, however, as later that year the river Elwy burst its banks leading to severe flooding. It was catastrophic for the local economy and many businesses were badly affected.

The St Asaph Cathedral Development Project aims to regenerate the city and the surrounding area and pivotal to this is the provision of a cathedral tearoom and lavatories. There are usually no lavatories at all at the cathedral and only portaloos during the annual North Wales Music Festival and other special events.

The Trust has a proud record of helping to fund the unglamorous essentials and is delighted to provide £8,750 for St Asaph to help it entertain coach tours, concert-goers, walkers and worshippers from all over the world.

The future is digital

Helping a charity give young people computer training

St Basil's is a charity that works with homeless 16 to 25-year-olds across the West Midlands. Single or young mothers with children, they have suffered neglect, abuse, poverty, bereavement, grown up in care, have mental health problems or have offended – often a devastating combination of all these (87% are NEET - not in education, employment or training).

St Basil's runs 28 supported accommodation centres and has recently enlarged its home in Redditch, a particularly deprived part of Birmingham, so that it can house 24 young people. But imagine 24 young people in a house with only one small room with a computer! Doing CVs, applying for courses and jobs, filling in benefit forms: all these essential steps to getting back on track are made even harder by lack of access to IT.

A grant of £1,000 from the Trust will provide St Basil's with three new computers, tables and chairs for a properly equipped training room, providing the means by which young residents can gain essential IT skills and compete with their peers in areas such as job applications and the search for permanent accommodation.

Allchurches Trust Limited

A village hall for all

The refurbishment of All Saints will provide a vital community space

The parish church of All Saints stands proudly on a hill overlooking the village of Herodsfoot. It's the only communal space in this tiny Cornish village of only 200 inhabitants. With services only once a month, the church could not survive without also hosting a range of social and community events and fortunately it has a strong local Friends group.

However, the church lacks basic facilities. Pews have been removed from the back of the nave but the parochial church council (PCC) urgently wants to add a kitchen, a lavatory and to improve the heating.

A survey of the villagers identified strong local support for this and with a grant of £1,500 from the Trust, building work can press ahead.

Reaching far and wide

How an online resource will bring a whole nation together

The Church of Ireland has parishes far and wide, from the bustling city centre of Dublin to the most rural village locations. The church wants to make sure that everyone can interact with and feel part of the national body, and that people can make use of the resources it has to offer.

A newly designed parish resources website, funded by the Trust with a grant of £90,000, will provide access to useful tools like sample accounts and commonly used forms. The website will also enable people to network and stay in touch with each other more easily, for example by holding virtual meetings rather than having to travel large distances.

Two into one

How two parishes are updating one church to serve their communities

The parishes of All Saints and St Frideswyde united in 2011, and decided to have just one church building and church hall. Now they want to update their church to better serve the local community of Crosby, Liverpool.

The church is on a busy road and doesn't have much frontage, so people often miss it. Having sold some land owned by the PCC, the parishes have 75% of the money they need to update their facilities and extend the church frontage in order to give the church more impact.

We have made a grant of £8,000 available to help make the church a multi-purpose space, with meeting rooms and a community area, as well as full disabled access. The church has been working in the community with young people and people who feel excluded, and this project will enable them to build on their successes.

Allchurches Trust Limited

From the ground up

How one congregation plans to build a whole new church

The Isle of Cumbrae is a 10-minute ferry ride from the Ayrshire Scottish coast, and thousands of tourists and day-trippers visit the island every week. Sadly, the Cumbrae Parish Church has had to close as the building is unsafe and the congregation is meeting in a local shop.

Now the congregation wants to build a new church and community centre and the Trust is helping with a grant of £9,000. They want somewhere that will encourage young people to stay on the island while also catering for its large elderly population; a place to provide worship and welcome for both young and old, local people and visitors, those with special needs and those needing a special space.

In the neighbourhood

St Catherine of Siena will bring young and old people together

A recent survey shows that the population of West Berkshire will become increasingly elderly over the next 20 years. St Catherine of Siena in Tilehurst could provide a warm welcome to elderly people who feel isolated, as the church already has a number of links with the community. But the facilities urgently need updating.

With a grant of £7,000 the Trust is helping to fund a development project to create a new multi-use space at St Catherine's, with a kitchen, a ministry room and updated lavatory facilities. The church will be able to expand its popular lunch club from meeting once to three times a week, and to offer other activities for older people too.

The lunch club will give younger people and people with learning difficulties the chance to volunteer and gain useful skills in food preparation. St Catherine's will become a crucial meeting point for people from many different sections of the community and different age groups.

More room at the museum

Improving visitor facilities at an important heritage site

John Wesley was an Anglican cleric and theologian who, with his brother Charles and fellow cleric George Whitefield, founded Methodism. John Wesley's Chapel in Bristol, known as The New Room, is the oldest Methodist chapel in the world and played an important role in the brothers' lives.

The chapel is now a Methodist museum, though people often visit for quiet contemplation.

Now the trustees of this important heritage site want to enhance the visitor facilities and improve the museum. They have already raised £2.6 million from the Heritage Lottery Fund. The Trust is pleased to be supporting the project too with a grant of £7,000, not least because many of the issues in which John Wesley was involved – the anti-slavery movement, equality for women, social justice – still resonate today.

Allchurches Trust Limited

Why support matters

A grant means Ykids can reach out to children across deprived communities

Based in Bootle, Ykids is a Christian charity working in some of the UK's most deprived communities, ranking in the top 1% and 2% in the multiple deprivation indices. Its vision is to transform Bootle through its young people and their families. Working intensively with 500 children and 30 families a year, they run youth groups, a community garden, self-esteem workshops, employment training and a high street café teaching cooking skills from scratch.

Ykids currently works from a small, rented office where there's very little space so it has to find other venues to deliver youth work. Now the charity has a chance to convert an empty library building and make it their new home.

The Trust is supporting Ykids with a grant of £4,300 to make its vision a reality. The new space will enable it to expand its offer to include new apprenticeships, intergenerational projects and alternative education for young people not coping with school.

Learning the language

A £1,000 grant will help Widden Primary School support non-English speaking children

A number of children at Widden Primary School in Gloucester have challenging home lives, living in poverty or in a vulnerable situation, and many cannot speak English when they first start attending school.

Teachers at Widden want to set up a new kind of service to support the children most in need. They have set aside a room where they want to offer children a home-from-home environment, helping to develop their English skills and enabling them to reach the right level of education for their age.

The Trust is helping the school furnish and adapt the room. The facility will be used by the majority of the 270 children at the school, and will enable Widden to engage more fully and meaningfully with parents too.

Making the grade

Revitalising a grade 1 building to serve the local community

St Mary Magdalene is a grade 1 listed building on the side of the Regent's Canal in Paddington. It's an outstanding example of neo-Gothic architecture, but is now on the English Heritage at Risk register.

St Mary's has recently joined forces with the Paddington Development Trust to add a new Heritage and Community Wing to the church. This will provide new facilities for visitors, including a learning workshop and a café that opens onto the canal.

The vision is for a combined worship and cultural space that can be used by the whole community. The area is extremely diverse, both culturally and economically, and with a grant of £75,000 the

Allchurches Trust Limited

Trust is supporting this project that will encourage people to meet and build a community all can share.

Helping the UK's largest cathedral

"No-one seeing Liverpool cathedral for himself ... can fail to recognise that here is one of the great buildings of Europe" John Betjeman

The Trust has become a significant donor to Liverpool Cathedral's 24 for 2024 Centenary Campaign to raise £24 million by 2024. Our grant of £100,000 will help secure a future for the UK's largest cathedral, also the fifth largest in the world and with the widest stone Gothic arches on earth! Liverpool's position near the sea has led to the cathedral's sandstone being eroded by salt and a major repair programme is needed to see the cathedral fit for its centenary in 2024. A huge range of activities takes place in this vast building but our grant will help the cathedral community to offer even more.

Modernisation supporting mission

New life breathed into 130-year-old building to meet the needs of the 21st century church and community

Trinity URC and Methodist Church is the centre for a host of community activities in the market town of Great Harwood in East Lancashire. Activities at the church range from a weekly luncheon club for more than 90 people and dance classes to meetings for mothers and toddlers and members of The University of the Third Age.

The church, which is more than 130 years old, is in need of refurbishment. The plans include new toilet facilities, and a reconfigured entrance and foyer – in which the current large-tread staircase will be replaced with an easy-to-climb low-tread version and feature a coffee area and drop-in centre. New heating and lighting will also make the building more economical and practical to run.

The £50,000 grant awarded, combined with the funds that the church has raised itself over the last six years, has brought the start of the refurbishment work closer.

Allchurches Trust Limited

Key Performance Indicators

The charity's key performance indicators are evolving. Systems are in the process of being developed so that targets can be set and performance monitored.

Financial

Indicator	Measure	Performance
Incoming resources	<p>The amount received from EIO plc in the form of gift aid payments.</p> <p>The level of gift aid that we expect to receive from EIO plc is set over a three-year period. EIO plc had undertaken to donate £50m to charity, including gift aid payments made to the Trust, over the three-year period from 2014-2016.</p>	<p>During 2016, we received gift aid payments totalling £24.0m from EIO plc (2015: £20.0m), taking the total received in the three-year period 2014-2016 to £67.5m, as EIO plc more than achieved its charitable giving goal.</p> <p>As part of the strategic vision for the development of Ecclesiastical over the next four years, EIO plc has set an even more challenging goal of giving an additional £100 million to charity by the end of 2020.</p>
Charitable giving	<p>The total charitable giving awarded by the Trust.</p> <p>It is our policy to try to ensure stability for beneficiaries and, where possible, steadily to increase the overall levels of charitable giving awarded. Because of the fluctuating nature of our income, we do not set a specific target by which charitable giving will be increased each year.</p>	<p>During 2016, total charitable giving awarded rose by 12.9% to £13.2m (2015: rose by 20% to £11.7m).</p>
Diversification of assets	<p>The proportion of the capital endowment fund as a percentage of the Trust's total assets.</p> <p>It is the medium term aim of the Trust to grow the capital endowment fund to 20% of the Trust's total assets. This diversification in assets will help us ensure that a sustainable flow of funds is available for charitable giving.</p>	<p>During 2016, transfers of £18.0m (2015: £10.0m) were made into the capital endowment fund. At the end of 2016 the capital endowment fund represented 14% (2015: 10%) of the Trust's total assets.</p>

Allchurches Trust Limited

Non-Financial

Indicator	Measure	Performance
Diversity of charitable giving	<p>The trustees want to ensure that the Trust's giving is geographically and denominationally spread, varies in size according to the scale and nature of each project, and is used to support a range of projects in line with its objects.</p> <p>Systems are being developed to track the geographical spread of the charity's grants.</p> <p>The varying size of individual grants made is assessed by the number of donations made in the following ranges: below £6,250; and above £6,250.</p>	<p>The recruitment of a grants officer for the South East has improved our geographical reach. We have also increased our presence in Ireland and regular visits are made to Irish applicants.</p> <p>The number of donations made in 2016 in these ranges is presented in the table on page 14 of this report.</p>
Beneficiary satisfaction	<p>The number of complaints received as a percentage of total applicants.</p> <p>The trustees want to ensure that beneficiaries remain satisfied in their dealings with the Trust and that complaints received remain below 1% of applicants.</p>	<p>The Trust prides itself on maintaining very high levels of satisfaction from its beneficiaries particularly in relation to their experience when applying for charitable giving. No complaints were received from beneficiaries during the current or prior year.</p>
Promoting awareness of the Trust	<p>The number of presentations made to beneficiaries and stakeholders of the Trust to promote awareness of what the Trust does and the nature of the projects it supports.</p>	<p>During 2016, 12 presentations (2015: 26 presentations) were given to a variety of groups including beneficiaries. In addition it was agreed in 2016 that a communications function would be developed. This will be progressed in 2017.</p>
Improving the experience of potential beneficiaries	<p>Development of the Trust's website as a vehicle for engaging with potential beneficiaries.</p>	<p>During 2016, the Trust's website was refreshed to provide more information about the Trust and to make it even easier for applicants to apply. Further work is planned during 2017.</p>

Allchurches Trust Limited

Financial review

Parent charity

The charity statement of financial activities is shown on page 40.

Income

In 2016, the charity's total income was £33.8m, a 55.7% increase on the prior year.

Donations under gift aid totalling £24.0m (2015: £20.0m) were received from EIO plc. The donations received from EIO plc are our principal source of funding. They are used to finance the regular charitable giving to dioceses and cathedrals and to finance the specific requests for charitable giving received from churches and charitable organisations.

The charity received additional donations totalling £7.6m from Methodist Insurance PLC.

Dividend and interest income on the capital endowment fund increased to £2.1m (2015: £1.6m) as a result of an increased level of investment arising from diversification of the charity's assets.

Expenditure

Charitable giving increased in the year by 12.9% to £13.2m. An analysis of charitable giving is shown on page 14 of this report.

Expenditure on other charitable activities increased to £0.6m as a result of our investment in human resources and increases in travel costs and advisory fees.

No significant change in activities occurred in the year or to the date of this report.

Funds

Total net income in the year was £55.2m (2015: £17.5m). This comprises:

- net income of £47.1m in the unrestricted fund which includes a £29.1m fair value gain on the value of the charity's investment in subsidiary undertakings; and
- net income of £8.1m in the capital endowment fund as a result of a £6.3m increase in the fair value of investments.

Transfers of £18.0m (2015: £10.0m) were made from the unrestricted fund into the capital endowment fund to further the Board's objective to diversify the charity's assets to ensure the sustainability of its charitable giving.

Total funds in the charity at 31 December 2016 were £488.2m (2015: £433.0m) consisting of £418.3m in the unrestricted fund (2015: £387.8m) and £69.9m (2015: £45.2m) in the capital endowment fund.

Allchurches Trust Limited

The unrestricted fund includes a revaluation reserve of £402.4m (2015: £373.2m) which represents the cumulative increase in the fair value of the charity's investment in subsidiary undertakings. The revaluation reserve is not available for charitable purposes.

The charity continues to have adequate available resources to continue its charitable activities.

Trading subsidiaries

The consolidated statement of financial activities is shown on page 43.

Net income

The principal activities of the charity's trading subsidiaries throughout and at the end of the year remain the provision of general insurance and a range of financial services in the United Kingdom and overseas. A list of these undertakings is given in note 44.

The trading subsidiaries reported net income of £76.7m (2015: net income of £48.7m), which includes the £25.0m release of the claims equalisation provision (2015: £0.3m release) as explained in note 38. General business underwriting profits rose for the third consecutive year. The liability portfolio benefited from the favourable development of prior year claims which settled at less than anticipated. The property portfolio was impacted by catastrophe events in Australia and Canada, in particular the Fort McMurray wildfire in Alberta.

Investment returns were better than the prior year reflecting the rise in the UK stock markets to an historic high in December, with the value of overseas investments benefiting from the low value of the pound.

Details of the key performance indicators for EIO plc are found in the Strategic Report of its accounts. Copies of these accounts are available from the registered office, as shown on page 5, and are provided to members of the charity.

During the year, the trading subsidiaries directly distributed £0.7m (2015: £0.6m) for charitable purposes.

No fund or subsidiary was materially in deficit at the end of the year.

Consolidated funds

The consolidated balance sheet is shown on page 45.

At the year end date, total group net assets were £593.1m (2015: £539.4m).

Group net assets include a net pension deficit of £24.8m (2015: net pension asset of £8.6m). The charity's trading subsidiaries operate two defined benefit pension schemes, both of which are closed to new entrants. The movements in the pension schemes in the year are the result of changes in financial assumptions, in particular a significant fall in the discount rate and a small increase in inflation partially offset by gains resulting from other financial assumption changes. The cost of pension benefits and the present value of pension benefit liabilities depend on factors that are determined on an actuarial basis using a number of assumptions. Any changes in these assumptions

Allchurches Trust Limited

will impact the profitability of the trading subsidiaries and may affect future funding of the pension schemes.

Factors affecting future financial position and performance

The principal factor affecting the future position and performance of the charity is the performance of its trading subsidiaries, which are the principal source of funding for its charitable activities. During 2016 the trustees commissioned an independent review of the Trust's investment in Ecclesiastical, the outcome of which is discussed on page 12 of this report.

Details of the principal risks and uncertainties to which the charity is exposed are given on pages 30-33 of this report.

Allchurches Trust Limited

Investments

Investment objective and policy

Full details of the charity's investments in related undertakings are disclosed in note 44.

As explained on page 22 of this report, the charity has established a capital endowment fund to assist in diversifying its asset base to reduce the concentration risk arising from its ownership of a financial services group. Insurance is a risk business and the charity's income from its subsidiaries, in the form of gift aid, varies considerably over time. Gradually building the size of the capital endowment fund enables the charity to grow a separate income stream, for the benefit of present and future generations.

The principal investment objective in relation to the charity's capital endowment fund is to maximise long-term investment returns through a diversified portfolio with an acceptable risk profile. The target asset weighting for invested funds is:

Equities	60% - 80%
Fixed interest securities	10% - 30%
Property	0% - 10%
Cash	0% - 20%
Unquoted investments	0% - 5%

The Board regularly reviews the appropriateness of the investment strategy. The Board's principal obligation is to promote and protect the financial interests of the charity and of its beneficiaries. The capital endowment fund's performance will normally be reviewed annually against an agreed benchmark.

The trustees have adopted as part of the investment policy an absence of harm approach, and seek to avoid investing in companies whose activities may be inconsistent with the values of the charity's beneficiaries or supporters. These have been determined as companies wholly or mainly involved in the manufacture or production of tobacco, strategic arms and weaponry and pornographic media. The trustees believe this provides an appropriate balance between ethical considerations and fiduciary responsibility. Social investment does not form a material part of the capital endowment fund's investment activity. Any social investments must fully meet the financial and risk objectives and requirements of the fund.

As set out in the objectives on page 9 of this report, the trustees will review the charity's investment policy during 2017.

Investment environment

The investment environment in 2016 generally improved over the year as global deflation fears receded and the commodity markets staged a moderate recovery. The Federal Reserve in the US raised interest rates in the US as the economy continues to expand, unemployment has fallen to low levels and wage inflation is showing signs of growth. But the investment markets were driven as much by political shocks as investment fundamentals. These included the UK electorate's decision to

Allchurches Trust Limited

leave the European Union and the poll-defying election of the Republican candidate Donald Trump, highlighting voters' dissatisfaction with mainstream politicians and parties.

The collapse in Sterling following the Brexit vote had a significant impact on investment returns over the period. UK equities generated strong returns but tended to lag those of overseas markets in Sterling terms as the latter benefited from the weakness of the pound. Government and corporate bonds delivered decent returns for investors as bond yields declined.

Investment performance

The capital endowment fund amounted to £69.9m (2015: £45.2m) at 31 December 2016.

The investment portfolio, which consists of the capital endowment fund investments (note 13) and cash at bank and in hand (note 15), is managed on behalf of the charity by EdenTree Investment Management Limited (EIM), a subsidiary of EIO plc. At the year end the portfolio consisted of a £48.2m 'directly invested' portfolio, a £5.6m holding in the Amity Balanced Fund, a £5.9m holding in the Amity Global Equity Income Fund and a further £10.0m in cash which, pending investment, was put on short term deposit in January 2017.

At the year end date the asset allocation of the portfolio was skewed due to a £13.0m cash transfer from the unrestricted fund on 30 December. During the remainder of the year the directly invested portfolio was invested in line with the target asset weightings referred to on page 27 of this report.

Investment income in the year was £2.1m (2015: £1.6m) and fair value gains were £6.3m (2015: £1.2m fair value loss).

Over the year the 'directly invested' investment portfolio, managed by EIM, at a total asset level performed ahead of its blended benchmark created by using the benchmark index asset returns and mid-target range weightings. It has also performed ahead of benchmark over the last three and five years.

The Amity Global Equity Income and Amity Balanced Fund underperformed their respective benchmark indices, mainly due to a higher than benchmark exposure to Sterling-denominated assets, over a period in which Sterling depreciated heavily. The two funds also lag behind benchmark over the longer term.

The Board and the Investment Committee keep the performance of the investment portfolio, including the Amity Funds, under review. EIM reports regularly to the Board and the Investment Committee.

Allchurches Trust Limited

Reserves policy

The trustees have an approved reserves policy which is reviewed at least annually. The trustees do not designate the funds that the charity receives.

It is the intention of the trustees to maintain the stability of the annual charitable giving the charity makes to dioceses and cathedrals. As the charity's principal income is derived from a cyclical industry, the trustees need to consider the potential volatility in income and the desire to have stable charitable giving when setting an appropriate reserves policy. The charity's management of these risks is outlined in the principal risks and uncertainties section on page 30.

In order to provide this stability it is the trustees' policy to retain in reserve, cash funds, including long-term cash deposits with original maturities over three months, at a level at least equivalent to the amount allocated for charitable giving to dioceses and cathedrals in the previous financial year. In addition, reserves are held where the charity has committed to longer-term funding for specific projects and for charitable giving which is contingent upon the satisfaction of agreed conditions. Funds are also held in reserve where the trustees are actively considering the development of new grant programmes.

Where year end reserves held are significantly in excess of the requirements outlined above, the trustees take corrective action to reduce the level of reserves held. This action may include, but is not limited to, any of the following:

- actively seeking to fund further projects that align with the charity's purposes;
- increasing the level of donations to existing beneficiaries in future periods; or
- transferring cash to the capital endowment fund in line with the charity's strategic objective to diversify its assets.

The purpose of the capital endowment fund and the charity's investment objectives and policy are outlined on page 27.

To comply with the reserves policy, the charity is required to hold cash funds, including long-term cash deposits, of at least £8.2m in the unrestricted fund at 31 December 2016, equivalent to the amount allocated for charitable giving to dioceses and cathedrals in 2016.

At the end of the year, the charity had cash reserves of £16.9m in the unrestricted fund, consisting of £6.4m cash at bank and in hand, £3.5m short term deposits and £7.0m cash deposits with original maturities over three months. £8.2m has been committed for charitable giving and will become payable in the future. £1.0m will be used to settle the accruals for grants payable as recognised in note 16, which includes two material grants: one for £250,000 and another for £200,000.

Uncommitted reserves in the unrestricted fund total £7.7m at the end of the year.

Allchurches Trust Limited

Principal risks and uncertainties

The major risks to which the charity is exposed are reviewed by the Board with the aid of external advisers. Due to the nature of certain risks it is not possible or cost-effective to mitigate fully all risks.

The principal risks identified are detailed below together with a summary of the key mitigants.

Principal risks	Why they are important	How they are managed
<p>Market risks The investment risks relate to underperformance of the investments of the charity which adversely impacts its ability to undertake charitable giving.</p>	<p>A key objective of the charity is to contribute to the funds of any charitable institution, association, fund or object and to carry out any charitable purpose. Poor performance of the investments would result in reduced funds available to fulfil this objective.</p> <p>The key investments of the charity are Ecclesiastical and a capital endowment fund.</p> <p>Ecclesiastical's main business is general insurance which is historically volatile and therefore can result in a changeable income stream. The principal business risks associated with Ecclesiastical are found in the Risk Management section of the EIO plc annual report and accounts which are available from the registered office, as shown on page 5.</p>	<p>The charity has established an Investment Committee to set investment criteria and to oversee the performance of the investment portfolio. The performance of the investments is reviewed regularly. Limits have been established for the range of investments held within the capital endowment fund to ensure a diversified portfolio with an acceptable risk profile. The Board has also appointed a fund manager (whose appointment is reviewed regularly), who meets with the Chair of the Investment Committee quarterly.</p> <p>A formal policy exists between the charity and Ecclesiastical which specifies how the level of the gift aid payment is determined and this is supplemented by regular reporting from Ecclesiastical on its performance. In addition, two of the trustees of the charity are on the boards of EIG plc and EIO plc.</p> <p>The reserves policy on page 29 details the charity's policy to maintain the stability of charitable giving to its regular beneficiaries.</p> <p><i>The risk has remained broadly similar over the course of 2016 despite the volatility in the economic environment caused by the results of the EU referendum and US election.</i></p>

Allchurches Trust Limited

Principal risks	Why they are important	How they are managed
<p>Concentration risk The risk of detriment to the charity as a result of overexposure to the primary source of funding and capital.</p>	<p>The charity derives the majority of its income from its investment in Ecclesiastical. This means that there is a significant reliance on the ongoing performance of Ecclesiastical to enable the charity to continue to deliver its objectives.</p>	<p>The charity formally sets out its expectations of Ecclesiastical. This is reviewed regularly and there is ongoing monitoring of the performance against these expectations.</p> <p>The charity regularly reviews its strategy and diversification needs to ensure the level of this risk remains acceptable.</p> <p>The charity has a capital endowment fund which is being built up to provide greater diversification of the charity's assets. This will continue to be increased.</p> <p><i>The level of this risk has not materially altered during the year, although the trustees' decision to gradually increase the size of the charity's capital endowment fund will, over time, help to further mitigate the risk.</i></p>
<p>Regulatory risk The risk of public censure or regulatory intervention as a consequence of failing to comply with relevant legislation, policies etc ultimately leading to loss of public confidence in the Trust's charitable status.</p>	<p>As a charity, the activities of the Trust are closely governed by a wide range of legislation that must be complied with. Alongside existing legislation there continue to be frequent regulatory and legislative developments which must be closely monitored and acted upon in a timely manner. There could be significant cost and reputational implications if such changes are not identified, assessed and complied with in a timely manner.</p>	<p>The charity has a dedicated resource to provide regular updates on relevant legislative or regulatory items to the Board and there is also a formal training programme for all trustees. External expertise through solicitors and auditors among others is also used.</p> <p><i>The level of this risk is unchanged over the course of the year.</i></p>

Allchurches Trust Limited

Principal risks	Why they are important	How they are managed
<p>Reputation risk The risk of damage to the reputation of the Trust through the actions of any people associated with the Trust, its investments or sector scandals resulting in a loss of trust from the people and groups that the Trust is looking to assist.</p>	<p>The reputation of the Trust is critical to its ability to continue to fulfil its stated objectives. Damage to the reputation may lead to a significantly reduced number of bodies applying to the Trust for charitable giving and limit the reach of the Trust and the effectiveness of its strategies.</p>	<p>Reputational risk is monitored continually by the Board through the reporting provided at its regular meetings.</p> <p>Our principal asset insures church and charitable organisations including providing insurance cover for abuse claims. As we wish to ensure it behaves ethically when negotiating such claims, we are paying close attention to the work of the Independent Inquiry into Child Sexual Abuse (IICSA).</p> <p><i>The charity has appointed legal and PR advisors to provide specialist advice reflecting the fact that the level of risk has increased moderately during the year.</i></p>
<p>Strategy risk This is the potential for failing or being unable to formulate and/or deliver an appropriate strategy, resulting in a failure to achieve the charity's objectives which are detailed on page 9 of this report.</p>	<p>The charity employs a number of strategies which it considers are most appropriate to achieve its aims and objectives. These strategies also underpin a number of the risks detailed within this section. The strategies ensure that the charity is best placed to achieve the stated objectives.</p>	<p>The charity conducts an annual review of the effectiveness of the strategies employed. Regular advice is sought from external parties as part of this process.</p> <p>An annual review of board composition, skills and processes is undertaken to ensure ongoing appropriateness and identify areas for improvement.</p> <p><i>This risk has remained at a similar level during the year.</i></p>

Allchurches Trust Limited

Principal risks	Why they are important	How they are managed
<p>Operational risk This is the risk of an inability to deliver and operate within the policies agreed by the Board, resulting in a failure to meet the charity's objectives (full details of which are on page 9 of this report).</p>	<p>The Board sets the operational policies to be adhered to by staff and other people involved in the operation of the charity with the intention of ensuring that the charity's objectives are met. This risk relates to the potential for staff of the charity failing to deliver and operate within those policies, resulting in a failure to meet the objectives.</p>	<p>This risk is managed by a robust control framework that ensures the effective management of operational risk. This includes ongoing training and induction processes for its trustees and staff and also those who provide arm's length support services to the charity.</p> <p>The policies and agreements with third parties are also regularly reviewed and updated to reflect the changing environment.</p> <p><i>This risk has remained at a similar level during the year.</i></p>

The Strategic Report of Allchurches Trust Limited was approved by the Board and signed on its behalf by

Sir Philip Mawer
Chairman
25 April 2017

Allchurches Trust Limited

Trustees' Report

(incorporating the Directors' Report for the year ended 31 December 2016)

The trustees, who are the directors of the charitable company for Companies Act purposes, are pleased to present their annual report and review together with the audited financial statements of the charity and the group for the year ended 31 December 2016. In this report they are referred to as the trustees or, collectively, as the Board.

The financial statements comply with the Charities Act 2011, the Companies Act 2006, the Articles of Association, and Accounting and Reporting by Charities: Statement of Recommended Practice applicable to charities preparing their accounts in accordance with the Financial Reporting Standard applicable in the UK and Republic of Ireland (FRS 102) (effective 1 January 2015).

Structure, Governance and Management

Governing document

Allchurches Trust Limited was incorporated in 1972 in England and Wales. It is a company limited by guarantee not having a share capital and is a registered charity.

The governing documents are the articles of association.

In accordance with the articles of association, the company in general meeting may admit any person to membership provided the total number of members does not exceed 50. In the event of the company being wound up, the liability of each of the members is limited to £1. A member has the ability to affect the governance of the charity by voting at its annual general meeting (including on the election, re-election and removal of trustees and on any changes to the charity's articles of association) and thereby influencing the way the charity is run. Members are also responsible for receiving and adopting the charity's report and accounts; voting on the appointment or removal of external auditors and voting on any changes to the charity's name or articles of association.

Organisation

The body responsible for the management, actions and decisions of the charity is the Board of trustees. The Board meets five times a year.

The Board seeks to ensure that all activities comply with UK law and regulatory guidance, and come within agreed charitable objectives. Its work includes setting the strategic direction of the charity, developing its objectives and policies, reviewing the performance of trading subsidiaries and delivering the outcomes for which the charity was established.

The Board has established an Investment Committee, an Audit and Risk Committee, a Nominations Committee and a Methodist Grants-Giving Committee.

The Investment Committee has two scheduled meetings a year and primarily oversees the charity's investment strategy, including the performance of its capital endowment fund.

Allchurches Trust Limited

The Audit and Risk Committee was newly formed in 2016 and has four scheduled meetings a year. It is responsible for the appropriateness of the charity's financial reporting, the rigour of the external audit processes and the effectiveness of the risk management framework.

The Nominations Committee has two scheduled meetings a year. Its remit includes reviewing the structure, size, composition and effectiveness of the Board and its committees; overseeing the recruitment and induction of new trustees and the professional development of all the existing trustees; and considering succession planning and the membership needs of the charity.

The Methodist Grants-Giving Committee was established in 2016 and considers applications from and grants to Methodist beneficiaries. It meets four times a year.

The day-to-day management of the charity is undertaken by its senior executive staff and the Company Secretary.

Board procedures have been established setting out a framework for the conduct of trustees, with clear guidelines as to the handling of any conflicts of interest and the standard of behaviour, responsibilities, and best practice expected of them in fulfilling their obligations to the charity.

Trustees are able, where appropriate, to take independent professional advice at no personal expense so that they are able to fulfil their role.

Appointments to the Board

The Board aims to have a diverse group of trustees, with a balance of necessary skills and experience, which is broadly representative of the communities it serves. Dialogue with stakeholders the charity serves take place in identifying potential candidates for the Board. All appointments to the Board are made on merit and to fulfil a specific function or need. The Board will advertise and engage external search consultants as appropriate.

In accordance with the articles of association, the Board may at any time appoint any person to be a trustee either to fill a casual vacancy or in addition to the existing trustees. Any such person appointed must retire at the following annual general meeting and will be eligible for election by the members. In certain circumstances, the articles of association permit a member to propose a trustee for election in general meetings.

The names of the trustees of the charity at the date of this report are stated on page 5.

Mr Michael A. Chamberlain and The Right Revd W. Nigel Stock resigned as trustees on 13 July 2016.

The Venerable Annette J. Cooper and Ms Denise P. Wilson retire by rotation and, being eligible, offer themselves for re-election at the forthcoming annual general meeting.

The trustees are covered by qualifying third-party indemnity provisions which were in place throughout the year and remain in force at the date of this report.

Allchurches Trust Limited

Trustees' induction and training

All trustees are required to undertake a formal and comprehensive induction to the charity and its trading subsidiaries upon joining the Board. The induction is a two-stage process and is undertaken by the Secretariat.

On acceptance of a position on the Board, all trustees receive an induction pack, which includes their appointment letter and terms; latest audited report and accounts; constitutional documents; protocols on conflicts of interest, the handling of price-sensitive information, governance framework and board procedures, directors' and trustees' duties; board minutes for the current and past year; and board dates and contact details.

After appointment, a one-day induction programme is provided where presentations are given by the Secretariat, Finance, Group Risk and Group Strategy functions, and heads of the trading subsidiaries. The programme is also offered to other trustees as a refresher every two years and when a programme is being run. New trustees also meet individually with the Chairman, Deputy Chairman, Senior Independent Director and each of the Executive Directors of the main trading subsidiary, EIO plc.

In addition, trustees participate in a continuing professional development programme.

The Board undertook an internal evaluation of its performance during 2016, assisted by the Secretariat. The outcome of the evaluation was considered by the Board and the Nominations Committee and implementation of the agreed recommendations will be monitored by the Nominations Committee during 2017.

All trustees receive an annual review with the Chairman. The Chairman is appraised by the Board, in his absence, led by the Deputy Chairman.

Related parties

Related parties of the charity include its subsidiary undertakings. A full list of the charity's related undertakings is disclosed in note 44 to the financial statements. All subsidiaries listed are included in the consolidated financial statements.

Where it is sensible and appropriate to do so in terms of efficiency and the prudent use of resources, the charity uses facilities and services provided by EIO plc for administrative support. Some of the services provided are donated by EIO plc and others are recharged.

None of the trustees receives any remuneration or other benefit from their work with the charity.

A conflicts register is maintained by the Company Secretary to monitor and manage any potential conflicts of interest. Training on the Companies Act 2006 and Charities Act 2011 has been given to all trustees and they are regularly reminded of their duties. Any conflicts are declared at the first board meeting at which the trustee becomes aware of the potential conflict and are then recorded in the conflicts register. The Board considers all conflicts in line with the provisions set out in the Company's articles. The trustees are required to review their interests recorded in the conflicts register twice a year.

Allchurches Trust Limited

Remuneration policy

The day-to-day management of the charity is undertaken by its senior executive staff and Company Secretary, who are the charity's key management personnel. Philip Arundel, Janet Gough and Rachael Hall were the key management personnel of the charity during the year. Remuneration of key management personnel is disclosed in note 12 to the financial statements.

All trustees give their time freely and no remuneration was received by any trustee in the year. The articles of association include a power to pay a chairperson but no such fee has been paid to date. Details of trustees' expenses are disclosed in note 11 to the financial statements.

The charity itself has no direct employees, but uses staff employed by a subsidiary company to undertake its charitable activities. These employee costs are recharged to the charity. The remuneration policy for the group can be found in the Group Remuneration Report of the EIO plc annual report and accounts which are available from the registered office, as shown on page 5.

Charitable giving policy

The Board regularly reviews its charitable giving policy to ensure it reflects the changing circumstances of the charity, its strategic direction, its objects and its beneficiaries' needs, and thereby advances public benefit. A copy of the Trust's charitable giving policy can be found on the home page of our website.

Applications in respect of individual projects with a total value in excess of £0.5m are referred to the Board for consideration. These applications are subject to initial appraisal by the Chairman and grants officers.

Consideration of applications relating to individual projects of up to £0.5m is delegated by the Board to the Chairman and a grants officer. All charitable giving made under this delegated authority is disclosed to the Board at its next meeting.

Consideration of applications which seek to promote the mission and ministry of the Methodist Church in Great Britain and the Methodist Church in Ireland is delegated by the Board to the Methodist Grants-Giving Committee. All charitable giving made under this delegated authority is disclosed to the Board at its next meeting.

Charitable giving by subsidiaries

The trading subsidiaries of the charity have an organised programme of direct community investment independent of the charity, which is managed centrally by Ecclesiastical's Group Corporate Responsibility team and at business unit level by local management. Through this programme they seek to fulfil their position as responsible businesses, to build and support their customers and brand, and to engage their people. It operates in two key ways: supporting projects and partnerships important to customers and communities; and providing charitable support for employees to give to causes close to their heart.

Allchurches Trust Limited

Political donations

As a charity, the Trust is not able to make political donations. It is the policy of the charity's main trading subsidiaries not to make political donations.

Going concern

A review of the financial position and performance of the charity and its trading subsidiaries has been outlined in the Strategic Report on pages 24 and 25 together with a description of the principal risks and uncertainties faced by the charity on pages 30-33.

The charity, together with its trading subsidiaries, has considerable financial resources: the unrestricted fund has investments of £879.3m, 93% of which are liquid (restated 2015: investments of £848.2m, 94% liquid); cash at bank and in hand of £122.7m and no borrowings (restated 2015: cash at bank and in hand of £140.7m and no borrowings). As a consequence, the trustees have a reasonable expectation that the group is well placed to manage its business risks successfully and continue in operational existence for the foreseeable future.

Accordingly, the trustees continue to adopt the going concern basis in preparing the annual report and accounts.

Trustees' Responsibilities Statement

The trustees (who are also directors of Allchurches Trust Limited for the purposes of company law) are responsible for preparing the Trustees' Annual Report and the financial statements in accordance with applicable law and United Kingdom Accounting Standards (United Kingdom Generally Accepted Accounting Practice) including FRS 102 "The Financial Reporting Standard applicable in the UK and Republic of Ireland".

Company law requires the directors to prepare financial statements for each financial year which give a true and fair view of the state of affairs of the charitable company and the group and of the incoming resources and application of resources, including the income and expenditure, of the charitable group for that period. In preparing these financial statements, the trustees are required to:

- select suitable accounting policies and then apply them consistently;
- observe the methods and principles in the Charities SORP;
- make judgements and estimates that are reasonable and prudent;
- state whether applicable UK Accounting Standards have been followed, subject to any material departures disclosed and explained in the financial statements; and
- prepare the financial statements on the going concern basis unless it is inappropriate to presume that the charitable company will continue in business.

The trustees are responsible for keeping adequate accounting records that disclose with reasonable accuracy at any time the financial position of the charitable company and enable them to ensure that the financial statements comply with the Companies Act 2006. They are also responsible for

Allchurches Trust Limited

safeguarding the assets of the charitable company and the group and hence for taking reasonable steps for the prevention and detection of fraud and other irregularities.

The directors are responsible for the maintenance and integrity of the corporate and financial information included on the charitable company's website. Legislation in the United Kingdom governing the preparation and dissemination of financial statements may differ from legislation in other jurisdictions.

Auditor and the disclosure of information to the auditor

So far as each person who was a trustee/director at the date of approving this report is aware, there is no relevant audit information, being information needed by the auditor in connection with preparing its report, of which the auditor is unaware. Having made enquiries of fellow trustees and the charity's auditor, each trustee has taken all the steps that they ought to have taken in order to make themselves aware of any relevant audit information and to establish that the auditor is aware of that information.

This confirmation is given and should be interpreted in accordance with the provisions of Section 418 of the Companies Act 2006.

In accordance with Section 489 of the Companies Act 2006, a resolution proposing that Deloitte LLP be re-appointed as auditor of the charity will be put to the annual general meeting.

Equalities and diversity

The charity and its trading subsidiaries are committed to the principle and practice of equal opportunity in employment for all employees of group undertakings, applicants for employment and board membership.

The group recognises the importance of employee communication and aims to keep employees informed about its affairs through the use of briefing groups, group newsletters and the annual publication of financial reports. Regular meetings are held between management and employees and discussion is encouraged. It is the group's policy to give full consideration to applications for employment by disabled persons. Appropriate training is arranged for disabled persons, including retraining for alternative work of employees who become disabled, to promote their career development within the organisation.

The Trustees' Report of Allchurches Trust Limited was approved by the Board and signed on its behalf by

Sir Philip Mawer
Chairman
25 April 2017

CHARITY STATEMENT OF FINANCIAL ACTIVITIES (INCLUDING AN INCOME AND EXPENDITURE ACCOUNT)

for the year ended 31 December 2016

	2016			2015		
	Unrestricted funds £000	Endowment funds £000	Total funds £000	Unrestricted funds £000	Endowment funds £000	Total funds £000
Income and endowments from:						
Donations	7,672	-	7,672	55	-	55
Investments						
<i>Gift aid from subsidiary</i>	24,000	-	24,000	20,000	-	20,000
<i>Dividend and interest income</i>	96	1,993	2,089	31	1,595	1,626
Total income	31,768	1,993	33,761	20,086	1,595	21,681
Expenditure on:						
Raising funds	-	(165)	(165)	-	(129)	(129)
Charitable activities						
<i>Grants</i>	(13,196)	-	(13,196)	(11,692)	-	(11,692)
<i>Other expenditure on charitable activities</i>	(580)	-	(580)	(289)	-	(289)
Other	-	-	-	(52)	-	(52)
Total expenditure	(13,776)	(165)	(13,941)	(12,033)	(129)	(12,162)
Net gains/(losses) on investments	29,106	6,334	35,440	9,212	(1,211)	8,001
Taxation	-	(31)	(31)	-	(20)	(20)
Net income in the year	47,098	8,131	55,229	17,265	235	17,500
Transfers between funds						
Transfers to the endowment fund	(18,000)	18,000	-	(10,000)	10,000	-
Transfer of investment income	1,493	(1,493)	-	837	(837)	-
Net movement in funds	30,591	24,638	55,229	8,102	9,398	17,500
Total funds brought forward	387,759	45,240	432,999	379,657	35,842	415,499
Total funds carried forward	418,350	69,878	488,228	387,759	45,240	432,999

All income relates to continuing operations. The charity had no other recognised gains or losses during the current or prior year other than those included in the charity statement of financial activities.

CHARITY BALANCE SHEET

for the year ended 31 December 2016

	2016			2015
	Unrestricted funds £000	Endowment funds £000	Total funds £000	Total funds £000
Fixed assets				
Investments	402,402	54,909	457,311	411,427
Total fixed assets	402,402	54,909	457,311	411,427
Current assets				
Debtors	64	228	292	172
Investments	7,000	-	7,000	-
Cash at bank and in hand	9,938	14,743	24,681	22,014
Total current assets	17,002	14,971	31,973	22,186
Liabilities				
Creditors: amounts falling due within one year	(788)	(2)	(790)	(574)
Net current assets	16,214	14,969	31,183	21,612
Total assets less current liabilities	418,616	69,878	488,494	433,039
Creditors: amounts falling due after one year	(266)	-	(266)	(40)
Total net assets	418,350	69,878	488,228	432,999
The funds of the charity:				
Unrestricted funds	15,998	-	15,998	14,513
Endowment funds	-	69,878	69,878	45,240
Revaluation reserve	402,352	-	402,352	373,246
Total unrestricted funds	418,350	69,878	488,228	432,999
Total funds	418,350	69,878	488,228	432,999

The financial statements of Allchurches Trust Limited were approved by the Board on 25 April 2017 and signed on its behalf by:

Sir Philip Mawer
Chairman

C. Smith
Trustee

CHARITY STATEMENT OF CASH FLOWS

for the year ended 31 December 2016

	2016	2015
	£000	£000
Net income for the reporting period	55,229	17,500
Adjustments for:		
Gains on investments	(35,440)	(8,001)
Dividend and interest income from investments	(2,089)	(1,626)
(Increase)/decrease in debtors	(8)	1
Increase in creditors	450	378
Taxation paid	31	20
Net cash provided by operating activities	<u>18,173</u>	<u>8,272</u>
Cash flows from investing activities:		
Dividend and interest income from investments	1,934	1,608
Proceeds from the sale of investments	7,174	3,054
Purchase of investments	(24,618)	(8,438)
Net cash used in investing activities	<u>(15,510)</u>	<u>(3,776)</u>
Change in cash and cash equivalents in the reporting period	<u>2,663</u>	<u>4,496</u>
Cash and cash equivalents at the beginning of the reporting period	22,014	17,499
Change in cash and cash equivalents due to exchange rate movements	4	19
Cash and cash equivalents at the end of the reporting period	<u>24,681</u>	<u>22,014</u>

CONSOLIDATED STATEMENT OF FINANCIAL ACTIVITIES (INCLUDING A CONSOLIDATED INCOME AND EXPENDITURE ACCOUNT)

for the year ended 31 December 2016

	2016			Restated* 2015		
	Unrestricted funds £000	Endowment funds £000	Total funds £000	Unrestricted funds £000	Endowment funds £000	Total funds £000
Income from:						
Donations	7,579	-	7,579	-	-	-
Other trading activities <i>Income arising from trading activities</i>	272,687	-	272,687	270,935	-	270,935
Investments <i>Dividend, interest and rental income</i>	39,347	1,993	41,340	35,999	1,595	37,594
Total income	319,613	1,993	321,606	306,934	1,595	308,529
Expenditure on:						
Raising funds	-	(165)	(165)	-	(129)	(129)
Charitable activities <i>Grants</i>	(13,196)	-	(13,196)	(11,692)	-	(11,692)
<i>Other expenditure on charitable activities</i>	(487)	-	(487)	(234)	-	(234)
Other <i>Charitable donations paid by trading subsidiaries</i>	(739)	-	(739)	(613)	-	(613)
<i>Expenditure arising from parent</i>	-	-	-	(52)	-	(52)
<i>Expenditure arising from trading activities **</i>	(241,703)	-	(241,703)	(266,245)	-	(266,245)
Total expenditure	(256,125)	(165)	(256,290)	(278,836)	(129)	(278,965)
Net gains/(losses) on investments	16,309	6,334	22,643	13,072	(1,211)	11,861
Taxation	(9,144)	(31)	(9,175)	(4,384)	(20)	(4,404)
	70,653	8,131	78,784	36,786	235	37,021
Net (expenditure)/income for the year						
<i>a. arising from the charity</i>	(6,007)	8,131	2,124	(11,947)	235	(11,712)
<i>b. arising from trading activities</i>	76,660	-	76,660	48,733	-	48,733
	70,653	8,131	78,784	36,786	235	37,021

*The impact of discount rate changes on insurance contract liabilities has been presented within net gains/(losses) on investments for the first time in the current year. In the prior year the impact was included in expenditure arising from trading activities. The comparative financial statements have been restated to the revised basis, detailed in note 48.

**The claims equalisation provision, held within provisions in the prior year (note 38), was previously required by law and maintained in compliance with the insurance companies' regulations and INSPRU prudential sourcebook for insurers. Solvency II replaces these rules with effect from 1 January 2016 and does not require a claims equalisation provision to be held. The provision, net of deferred tax, was transferred to net (expenditure)/income on 1 January 2016, and is shown within expenditure arising from trading activities and taxation accordingly.

CONSOLIDATED STATEMENT OF FINANCIAL ACTIVITIES (INCLUDING A CONSOLIDATED INCOME AND EXPENDITURE ACCOUNT) (CONTINUED)

for the year ended 31 December 2016

	2016			2015		
	Unrestricted funds	Endowment funds	Total funds	Unrestricted funds	Endowment funds	Total funds
	£000	£000	£000	£000	£000	£000
Transfer between funds						
Transfers to the endowment fund	(18,000)	18,000	-	(10,000)	10,000	-
Transfer of investment income	1,493	(1,493)	-	837	(837)	-
Other recognised (losses)/gains						
Gains on revaluation of fixed assets	-	-	-	105	-	105
Actuarial losses on retirement benefits	(34,996)	-	(34,996)	(4,811)	-	(4,811)
Other gains/(losses)						
<i>Currency translation differences</i>	13,483	-	13,483	(6,461)	-	(6,461)
<i>Gains on net investment hedges</i>	2,067	-	2,067	-	-	-
Tax attributable to other recognised (losses)/gains	5,627	-	5,627	827	-	827
Minority interests	(9,104)	-	(9,104)	(9,181)	-	(9,181)
Net movement in funds excluding minority interests	31,223	24,638	55,861	8,102	9,398	17,500
Total funds brought forward	387,759	45,240	432,999	379,657	35,842	415,499
Acquisition of minority interests	(632)	-	(632)	-	-	-
Total funds carried forward	418,350	69,878	488,228	387,759	45,240	432,999

All income relates to continuing operations.

CONSOLIDATED BALANCE SHEET

for the year ended 31 December 2016

	2016	Restated*
	Total	2015
	funds	Total
	£000	funds
		£000
Fixed assets		
Intangible assets	26,607	31,336
Tangible assets	134,891	107,396
Investments	927,204	886,328
Total fixed assets	<u>1,088,702</u>	<u>1,025,060</u>
Current assets		
Debtors	414,982	312,520
Investments	7,000	-
Cash at bank and in hand	137,398	147,683
Total current assets	<u>559,380</u>	<u>460,203</u>
Liabilities		
Creditors: amounts falling due within one year	(97,786)	(94,203)
Net current assets	<u>461,594</u>	<u>366,000</u>
Total assets less current liabilities	<u>1,550,296</u>	<u>1,391,060</u>
Creditors: amounts falling due after one year	(1,543)	(1,282)
Provisions for liabilities	(919,010)	(849,692)
Net assets excluding retirement benefit obligations	<u>629,743</u>	<u>540,086</u>
Net pension (deficit)/asset	(24,752)	8,556
Other retirement benefit obligations	(11,913)	(9,193)
Total net assets including retirement benefit obligations	<u>593,078</u>	<u>539,449</u>
The funds of the charity:		
Unrestricted funds	15,998	14,513
Endowment funds	69,878	45,240
Revaluation reserve	577	572
Non-charitable trading reserves	380,327	366,553
Translation and hedging reserve	21,448	6,121
Total unrestricted funds	<u>488,228</u>	<u>432,999</u>
Minority interests	104,850	106,450
Total funds	<u>593,078</u>	<u>539,449</u>

*The comparative financial statements have been restated to reflect a reclassification of cash at bank and in hand to investments, detailed in note 48.

The consolidated financial statements of Allchurches Trust Limited were approved by the Board on 25 April 2017 and signed on its behalf by:

Sir Philip Mawer
Chairman

C. Smith
Trustee

CHARITABLE GIVING
(UNAUDITED)

CHARITABLE GIVING (UNAUDITED)

During the year, the charity made the following grants to Church of England Dioceses:

	2016 £000
Church of England Dioceses:	
Leeds Diocesan Board of Finance	335
The Diocese in Europe	17
The Diocese of Bath and Wells	140
The Diocese of Birmingham	136
The Diocese of Blackburn	130
The Diocese of Bristol	83
The Diocese of Canterbury	121
The Diocese of Carlisle	99
The Diocese of Chelmsford	260
The Diocese of Chester	159
The Diocese of Chichester	170
The Diocese of Coventry	91
The Diocese of Derby	140
The Diocese of Durham	173
The Diocese of Ely	101
The Diocese of Exeter	191
The Diocese of Gloucester	111
The Diocese of Guildford	99
The Diocese of Hereford	91
The Diocese of Leicester	131
The Diocese of Lichfield	233
The Diocese of Lincoln	166
The Diocese of Liverpool	156
The Diocese of London	440
The Diocese of Manchester	218
The Diocese of Newcastle	120
The Diocese of Norwich	178
The Diocese of Oxford	270
The Diocese of Peterborough	115
The Diocese of Portsmouth	73
The Diocese of Rochester	136
The Diocese of Salisbury	163
The Diocese of Sheffield	142
The Diocese of Sodor and Man	15
The Diocese of Southwark	258
The Diocese of Southwell and Nottingham	132
The Diocese of St Albans	147
The Diocese of St Edmundsbury and Ipswich	115
The Diocese of Truro	97
The Diocese of Winchester	125
The Diocese of Worcester	101
The Diocese of York	202

CHARITABLE GIVING (UNAUDITED)

During the year, the charity made the following grants to Church of England Cathedrals:

	2016 £000
Church of England Cathedrals:	
Birmingham Cathedral	22
Blackburn Cathedral	22
Bradford Cathedral	22
Bristol Cathedral	22
Bury St Edmunds Cathedral	22
Canterbury Cathedral	32
Carlisle Cathedral	22
Cathedral of the Holy Trinity, Gibraltar	22
Chelmsford Cathedral	22
Chester Cathedral	22
Chichester Cathedral	22
Coventry Cathedral	22
Derby Cathedral	22
Durham Cathedral	32
Ely Cathedral	22
Exeter Cathedral	22
Gloucester Cathedral	32
Guildford Cathedral	22
Hereford Cathedral	22
Leicester Cathedral	22
Lichfield Cathedral	22
Lincoln Cathedral	22
Liverpool Cathedral	22
Manchester Cathedral	22
Newcastle Cathedral	22
Norwich Cathedral	22
Peel Cathedral	22
Peterborough Cathedral	22
Portsmouth Cathedral	22
Ripon Cathedral	22
Rochester Cathedral	22
Salisbury Cathedral	22
Sheffield Cathedral	22
Southwark Cathedral	22
Southwell Minster	22
St Albans Cathedral	22
St George's Chapel, Windsor	22
St Paul's Cathedral	32
Truro Cathedral	22
Wakefield Cathedral	22
Wells Cathedral	22
Westminster Abbey	32
Winchester Cathedral	22
Worcester Cathedral	22
York Minster	32

CHARITABLE GIVING (UNAUDITED)

During the year, the charity made the following large grants, above £6,250:

	2016 £000
Large grants, above £6,250:	
Aberdeen Cathedral	11
Abingdon Baptist Church, Oxfordshire	7
Acomb Methodist Church, York	8
Adeyfield Free Church, Hemel Hempstead	35
All Saints' Church, Ilkley	14
All Saints' Church, Sparkwell, Plymouth	7
All Saints with St Frideswyde Church, Crosby, Liverpool	8
Amersham United Charities, Buckinghamshire	10
Badminton Road Methodist Church, Bristol	11
Bangor Cathedral	11
Bath Abbey, Somerset	50
Brecon Cathedral	11
Calvary Church (Haverfordwest), Pembrokeshire	23
Caterham Community Church, Surrey	7
Christ Church W4, Chiswick, London	7
College of St Barnabas, Lingfield, Surrey	9
Crofts End Church, Bristol	15
Cumbrae Cathedral (Scottish Episcopal Church, Isle of Cumbrae)	11
Cumbrae Parish Church of Scotland, Millport	9
Dorchester Community Church, Dorset	14
Dublin Cathedral	11
Dundee Cathedral	11
Dundonald Presbyterian Church, Belfast	16
East and Old Parish Church,(C of S) Forfar, Angus	13
Edinburgh Cathedral	22
Emmanuel Church, West Hampstead, London	10
Fountain Square Church, Tideswell, Derbyshire	8
Freeschool Court Evangelical Church, Bridgend	10
Fulham Palace Trust, London	30
Glasgow Cathedral	11
Gleneagles Anglican Church, Wellingborough	23
Havens Christian Hospice, Southend on Sea, Essex	9
Holy Trinity Church, Bradford on Avon	20
Holy Trinity Church, Frome	9
Holy Trinity Church, Minchinhampton	10
Holy Trinity Church, Rusholme, Manchester	14
Inverness Cathedral	11
Leaside Church, Ware, Hertfordshire	10
St Mary's Cathedral, Limerick, Republic of Ireland	11
Linacre Methodist Mission, Litherland, Liverpool	17
Liverpool Cathedral	100

CHARITABLE GIVING (UNAUDITED)

	2016 £000
Large grants, above £6,250 (continued):	
Llandaff Cathedral	22
Llanthony Secunda Priory Trust, Gloucester	20
Longton Community Church, Preston, Lancashire	34
Main Street Presbyterian Church, Garvagh, Coleraine, Londonderry Northern Ireland	12
Monmouth Cathedral	11
Mustard Tree, Manchester	50
Northampton Roman Catholic Diocesan Trust	48
Oban Cathedral	11
Perth Cathedral	11
Portsmouth Cathedral	10
Queen Victoria Seamen's Rest (QVSR), London	19
Representative Body of the Church of Ireland, Dublin	94
Richmond Baptist Church, Anfield, Liverpool	7
Ripon College Cuddesdon, Oxford	20
Riverside Church, Whitstable, Kent	24
Skipton Baptist Church, North Yorkshire	12
St Andrew's Cathedral, Inverness	10
St Anne and St Agnes Church, London	7
St Anne's Cathedral, Belfast	11
St Asaph Cathedral	20
St Barnabas Parish Church, London	46
St Bride's Roman Catholic Church, East Kilbride, Scotland	15
St Brigid's Cathedral, Kildare	11
St Canice's Cathedral, Kilkenny	11
St Catherine of Siena Church, Tilehurst, Reading, Berkshire	7
St Columb's Cathedral, Derry, Northern Ireland	11
St David's Cathedral	22
St Ebbe's Church, Oxford	58
St Endellion Parochial Church Council, Cornwall	10
St Fethlimidh's Cathedral, Kilmore	11
St Fin Barre's Cathedral, Cork	11
St George's Chapel, Windsor	10
St Helen's Church, Lundy Island	20
St John the Baptist Church, Busbridge, Surrey	19
St John the Evangelist Church, Redhill, Surrey	22
St John's Church, Egham	57
St Jude's Church, Plymouth	20
St Macartan's Cathedral, Enniskillen	11
St Mary Magdalene Church, Paddington	75
St Mary Without-the-Walls Church, Handbridge, Chester	15
St Mary's Cathedral, Tuam	11

CHARITABLE GIVING (UNAUDITED)

	2016 £000
Large grants, above £6,250 (continued):	
St Mary's Church (RC), Lanark, Lanarkshire Scotland	8
St Mary's Church, Loughton, Essex	10
St Mary's Church, Maidenhead, Berkshire	20
St Michael and All Angels Church, Harrow Weald, London	16
St Michael and All Angels Church, Summertown, Oxford	7
St Patrick's Cathedral, Armagh	11
St Patrick's Cathedral, Dublin	11
St Peter's Church, Bethnal Green	10
St Peter's Church, Yateley Hampshire	9
St Philip's Dorridge and St James' Church , Bentley Heath, West Midlands	35
St Richard's Church, Hanworth, London	7
St Wilfrid's Centre, Sheffield	25
The Anglican Church of Canada, Toronto	100
The Cathedral Church of the Blessed Virgin Mary of Lincoln	10
The Diocese of Aberdeen	7
The Diocese of Bangor	14
The Diocese of Brechin	7
The Diocese of Edinburgh	19
The Diocese of Glasgow and Galloway	14
The Diocese of Llandaff	47
The Diocese of Monmouth	22
The Diocese of St Andrews	8
The Diocese of St Asaph	23
The Diocese of St Davids	24
The Diocese of Swansea and Brecon	20
The General Synod of the Scottish Episcopal Church Nominees	18
The New Room (known as John Wesley's Chapel), Bristol	7
The Representative Body of the Church in Wales	182
The RESOLVE project	52
The Yonge Street Mission, Toronto, Canada	300
Truro Cathedral	14
Victoria Methodist Church, Bristol	15
Wellesley Parish Church,(Church of Scotland) Methil, Fife, NE Scotland	13
Willington Open Door Methodist Church, County Durham	8
Worcester Park Baptist Church, Surrey	19

CHARITABLE GIVING (UNAUDITED)

During the year, the charity made the following small grants, up to £6,250:

	2016 £000
Small grants, up to £6,250:	
1st Martock and Hamdon Boys' Brigade, Somerset	1
ABC to read, Reading	1
Aberyscir Parish Church, Brecon	1
Above and Beyond, Bristol	2
Acorn Christian Healing Foundation, Bordon	1
Actionplus Foundation, London	1
Albrighton Methodist Church, West Midlands	2
Alderney Methodist Church, Guernsey	2
Alive Church Lincoln	1
All Hallows Church, Ipswich	2
All Hallows' Church, Mitton	2
All Hallows Church, Woolfardisworthy West	1
All Nations Ministries, Plymouth	1
All Saints Church and Community Centre, Tuckingmill	1
All Saints' Church, Barnby-in-the-Willows	2
All Saints' Church, Baschurch	2
All Saints' Church, Bolton Percy	3
All Saints' Church, Boughton Aluph	2
All Saints Church, Bradford	1
All Saints' Church, Burnham Thorpe	1
All Saints' Church, Cawthorne	1
All Saints Church, East Hanningfield	1
All Saints' Church, East Huntspill	1
All Saints' Church, East Pennard	2
All Saints' Church, Faringdon	2
All Saints' Church, Gresford	1
All Saint's Church, Hameringham	1
All Saints' Church, Hannington	1
All Saints' Church, Herodsfoot	2
All Saints' Church, Horseheath	1
All Saints' Church, Little Shelford	1
All Saints' Church, Mappleton	1
All Saints' Church, Newland	2
All Saints' Church, Penarth	2
All Saints Church, Pickwell	1
All Saints Church, Preston in Holderness	1
All Saints Church, Ravenstone	1
All Saints' Church, Shelley	2
All Saints' Church, Sherbourne	2
All Saints' Church, South Cave	3
All Saints' Church, St Helier	2

CHARITABLE GIVING (UNAUDITED)

	2016 £000
Small grants, up to £6,250 (continued):	
All Saints Church, Stand	3
All Saints' Church, Staplehurst	1
All Saints' Church, Stisted	1
All Saints' Church, Sutton Courtenay	5
All Saints' Church, Tarrant Keyneston	1
All Saints' Church, Thrumpton	1
All Saints' Church, Tilbrook	1
All Saints Church, Welborne	3
All Saints Church, Weybourne	2
All Saints Church, Wing	1
All Saints' Church, Wood Norton	3
All Saints' Church, Writtle	1
All Saints' Parish Church, Evesham	1
All Saints' Parish Church, Leamington Priors	2
All Saints' Parish Church, Sherburn in Elmet	2
All Souls' Church, Cheriton	1
Amersham High Street Methodist Church, Buckinghamshire	2
Amesbury Baptist Church, Wiltshire	1
Annbank Parish Church, Ayr	5
Antioch Christian Centre, Llanelli	1
Apex Church, Peterhead	2
Argoed Baptist Chapel, Blackwood	3
Ark Church, Nottingham	1
Arthur Rank Hospice Charity, Cambridge	2
Ashar Bringing Hope, Shrewsbury	1
Ashford CE Primary School, Middlesex	0
Ashgate Hospicecare, Old Brampton, Derbyshire	2
Avendale Old Parish Church, Strathaven	2
Ballintemple Parish Church, Cavan	2
Ballycrochan Presbyterian Church, Bangor	1
Ballynure Methodist Church, Co. Antrim	1
Barlow and Cutthorpe Methodist Church, Derbyshire	1
Barnby Dun Methodist Church, South Yorkshire	1
Barrow Hill Methodist Community Church, Chesterfield	1
Baxter United Reformed Church, Kidderminster	2
Belhelvie Parish Church, Aberdeenshire	2
Bellaghy Presbyterian Church, Northern Ireland	1
Bethesda Church, Narberth	4
Bethesda Methodist Church, Redfield	3
Bethlehem Chapel, Blaenavon	1
Betws Penpont Church, Powys	1

CHARITABLE GIVING (UNAUDITED)

	2016 £000
Small grants, up to £6,250 (continued):	
Bishop Hannington Memorial Church, Hove	6
Bladon Methodist Church, Oxfordshire	4
Blessed Virgin Mary Church, Batcombe	3
Blockley Church, Gloucestershire	2
Bluestone Methodist Church, Portadown	2
Bognor Regis Baptist Church known as Opengate, West Sussex	4
Borley Church, Essex	1
Boroughbridge Methodist Church, North Yorkshire	1
Braniel Community Church, Belfast	1
Brockenhurst Anglican Church, Hampshire	4
Burgh St Margaret Church, Fleggburgh	3
Calvary Chapel, Kings Heath Elim Church, Birmingham	1
Caring For Life, Leeds	1
Castlepollard and Oldcastle Union of Parishes, Ireland	1
Castletown Parish Church, Carlow	1
Cathedral and Church Buildings Division, Church of England, London	2
Celebrate Norwich and Norfolk	1
Cemetery Road Baptist Church, Sheffield	1
Central Vineyard Church, Northampton	3
Chandler's Ford Methodist Church, Hampshire	1
Chapelton and Harehills Area Learning Project, Leeds	1
Chelmsford Cathedral	1
Cheltenham Minster Bell Appeal, Gloucestershire	5
Christ Church Barnstaple, Devon	2
Christ Church Morningside, Edinburgh	3
Christ Church South Manchester URC	6
Christ Church Southampton CIO, Hampshire	2
Christ Church with St Philip Church, Eastbourne	1
Christ Church Woodhouse, Huddersfield	1
Christ Church, Blacklands and St. Andrew's, Hastings	2
Christ Church, Clifden, Connemara	2
Christ Church, Dalbeattie	1
Christ Church, Eaton	2
Christ Church, Isle of Dogs	2
Christ Church, Liverpool	6
Christ Church, Ore	1
Christ Church, Oxford	1
Christ Church, Portsdown	2
Christ Church, Sidcup	5
Christ Church, Swallownest	1
Christ the King Church, Bowburn	1

CHARITABLE GIVING (UNAUDITED)

	2016 £000
Small grants, up to £6,250 (continued):	
Christ the Sower Ecumenical Primary School, Milton Keynes	3
Christchurch, Marton cum Grafton	1
Christchurch, Pointon	1
Christian Community Action, Reading	1
Church Housing Trust, Accrington	1
Church of Ireland, Kells Union of Parishes	1
Church of Our Lady, Upton Pyne	2
Church of Our Saviour, East Springfield	2
Church of St Andrew, Northwold	4
Church of St George, Douglas	2
Church of St John the Baptist, Berwick St John	2
Church of St Lawrence, Lackford	2
Church of St Mary and St Gabriel, Stoke Gabriel	2
Church of St Mary Magdalene, Fifehead Magdalene	1
Church of St Mary the Virgin, Brecon	4
Church of St Mary the Virgin, Halkyn	1
Church of St Michael and All Angels, Bishop's Cleeve	1
Church of St Peter the Fisherman, Craster	1
Church of the Ascension, Balham Hill	1
Church of the Ascension, Blackheath	3
Church of the Ascension, Kenton	1
Church of the Holy Cross, Moreton Morrell	3
Church of the Holy Rood, Ampney Crucis	3
Church of the Holy Rood, Holybourne	3
Church of the Holy Spirit, Bedgrove	3
Church of the Most Precious Blood, London	2
Churches Together Kings Lynn	1
Clophill Methodist Church, Bedfordshire	1
Coffee and Craft (Wycliffe Baptist Church), Reading	1
Colonsay and Oronsay Parish Church, Argyll	2
Coney Hill Baptist Church, West Wickham	2
Corpus Christi Catholic Primary School, Stechford	1
Coulsdon Church of England Primary School, Surrey	1
Cowbridge United Free Church, Vale of Glamorgan	2
Craiglockhart Parish Church, Edinburgh	2
Crayford Baptist Church, London	2
Crediton Congregational Church, Devon	4
Croes y Parc Baptist Church, Peterson-super-Ely	3
Cross Rhythms, Stoke-on-Trent	2
Cushendun Buildings Preservation Trust, Antrim	5
Dalziel St Andrew's Parish Church, Motherwell	1

CHARITABLE GIVING (UNAUDITED)

	2016 £000
Small grants, up to £6,250 (continued):	
Derg Parish Church, County Tyrone	2
Ditcheat Church, Somerset	1
Doncaster Deaf Trust, South Yorkshire	1
Downall Green Independent Methodist Church, Wigan	1
Downshire Road Presbyterian Church, Newry, Northern Ireland	2
Draycott Mission, Gloucestershire	1
Duffield Baptist Church, Derby	2
Dull and Weem Parish Church, Perthshire	1
Durisdeer Parish Church, Thornhill	1
Eccleston PCC, Lancashire	1
Edenderry Parish Church, Northern Ireland	2
Edinburgh University Christian Union	1
Edward Road Baptist Church, Birmingham	1
Elim Pentecostal Church Huddersfield	1
Elim Pentecostal Church, Thornton Heath	2
Eltisley Parish Church, Cambridgeshire	1
Emmanuel Baptist Church, Netherton	3
Erdington Six Ways Baptist Church, Birmingham	1
Erpingham Church, Norfolk	2
Evangelical Movement of Wales, Bridgend	5
Fairhaven United Reformed Church, Lancashire	2
Fallings Park Methodist Church, Wolverhampton	1
Fareham Baptist New Life Church, Hampshire	4
FirmFoundation, Harrow	1
Francis House Children's Hospice, Didsbury	1
Freedom Church Mereside, Blackpool	3
Friends of Gloucestershire Archives CIO, Gloucester	5
Friends Of Lambeth Palace Library - London	3
Friends of Nunney Church Parish of Postlebury, Somerset	4
Friends of St Mary's Church Bletsoe, Bedford	3
Garforth Methodist Church, Leeds	1
German-speaking Lutheran Church in East Anglia, Cambridge	4
Gillingham Baptist Church, Kent	6
Glenageary Killiney National School, Dublin	2
Godalming United Church, Surrey	2
Grange United Reformed Church, Southcote	1
Green Pastures Christian Nursing Home, Banbury	2
Greenwich Youth for Christ, Kidbrooke	1
Greyfriars Kirk, Edinburgh	1
Guildford Cathedral	5
Gunwen Methodist Chapel, Cornwall	4

CHARITABLE GIVING (UNAUDITED)

	2016 £000
Small grants, up to £6,250 (continued):	
Hackney Vineyard Church, London	1
Hailsham Parish Church, East Sussex	2
Hainault Road Baptist Church, Leyton	1
Hall Bower Sunday School, Huddersfield	1
Hall Green Methodist Church, Coventry	2
Hall Green United Community Church, Birmingham	2
Hampden Chapel Assemblies of God Church, Hackney	2
Happy Days Ministries UK, Halifax	3
Harbour Church, Portsmouth	4
Havering Road Methodist Church, Romford	6
Haxby and Wigginton Methodist Church, York	5
Heart Church, Nottingham	1
Hebrides Alpha Project, Isle of Lewis	2
Hele Road Baptist Church, Hele	1
Helping Hands Community Outreach Project, Portadown	2
Henley Methodist Church, Warwickshire	1
Hetton Methodist Church, Tyne and Wear	1
Hexham Community Church, Northumberland	2
Higherford Methodist Church, Lancashire	2
Hollingworth Methodist Church, Cheshire	1
Holy Apostles Church, Cheltenham	5
Holy Cross Church, Bilbrook	1
Holy Cross Church, Durley	1
Holy Cross Church, Hove	2
Holy Cross Church, Seend	2
Holy Trinity Church, Ascott-under-Wychwood	1
Holy Trinity Church, Barsham	2
Holy Trinity Church, Bickerstaffe	1
Holy Trinity Church, Bishop's Stortford	2
Holy Trinity Church, Blacon	1
Holy Trinity Church, Bledlow	3
Holy Trinity Church, Bolton Le Sands	4
Holy Trinity Church, Drybrook	1
Holy Trinity Church, Hurst Green	1
Holy Trinity Church, Killiney	1
Holy Trinity Church, Leeds	1
Holy Trinity Church, Milton Damerel	3
Holy Trinity Church, Nailsea	2
Holy Trinity Church, North Ormesby	1
Holy Trinity Church, Old Hill	3
Holy Trinity Church, Scoulton	1

CHARITABLE GIVING (UNAUDITED)

	2016 £000
Small grants, up to £6,250 (continued):	
Holy Trinity Church, Southport	5
Holy Trinity Church, Tattershall	1
Holy Trinity Church, Washington	4
Holy Trinity Church, Yockleton, Shrewsbury	2
Holy Trinity First School, Berwick upon Tweed	1
Holy Trinity Minster Church, Great Paxton	2
Holy Trinity Parish Church, Idle	1
Horeb Baptist Church, Nantymoel	1
Horizon Life Training, Harrogate	4
Horsington Church School, Somerset	1
Hospice of the Good Shepherd, Chester	2
Hot Line Meals Service, London	1
Hurtado Jesuit Centre, London	1
Ignite Elim Church, Lincoln	1
Immanuel Church, Chichester	1
John Paul 2 Foundation for Sport, London	1
Jubilee Church Hull	1
Julianstown Union of Parishes, Republic of Ireland	1
Junction Youth, St Mary Mags Church, Billingham	1
Kells Union of Parishes (St Columba's Church), Ireland	1
Kilsyth Methodist Church, Glasgow	1
King's Church Darlington, Durham	1
Kings Church Portsmouth, Hampshire	1
King's Church, Loughborough	1
King's Lynn Minster, Norfolk	6
Kingshurst Evangelical Church, Birmingham	6
Kingston Wesley Methodist Church, Hull	1
Kingussie Parish Church, Inverness-shire	2
Langham Arts Trust, London	2
Lee Abbey Fellowship, Devon	1
Leeds Diocese Music Department Schools Singing Programme, Leeds	3
Leicester Cathedral	1
Leuchars St Athernase Church of Scotland, Fife	6
Liberty Christian Ministries, Norbury	0
Lichfield Cathedral	1
Limekilns Parish Church, Fife	6
Lincoln Cathedral	1
Linwood Parish Church, Renfrewshire	2
Llangunllo Community Hall Management Committee, Powys	1
Llangunnor Church, Carmarthen	1
London School of Theology, Northwood	1

CHARITABLE GIVING (UNAUDITED)

	2016 £000
Small grants, up to £6,250 (continued):	
Long Sutton Baptist Church, Lincolnshire	1
Longbenton Methodist Church, Tyne and Wear	1
Longton Methodist Central Hall, Staffordshire	1
Lurgan Parish Church of Ireland, Ireland	1
Maghera Presbyterian Church, Northern Ireland	1
Marton United Reformed Church, Blackpool	3
Milton Baptist Church, Acton Bridge	1
Minister Church of Rotheram All Saints, South Yorkshire	3
Morley St Botolph's Church, Norfolk	2
Motherwell South Parish Church, Lanarkshire	1
Mount Zion Independent Methodist Church, Cliviger	3
Mullingar Union of Parishes - Almoritia Church, Ireland	1
Mure Memorial Church of Scotland, Baillieston	3
National Rheumatoid Arthritis Society, Maidenhead	5
New Brimington Methodist Church, Derbyshire	1
New Life Christian Centre, Colne	1
New Life Church, Congleton	1
New Life Community Church, Tonyrefail	5
New Machar Parish Church, Aberdeenshire	5
New Testament Church of God, Alvaston	3
North Watford Methodist Church, Hertfordshire	1
Northern Ireland Hospice, Newtownabbey	2
Northfield Methodist Church, Birmingham	3
Northgate United Reformed Church, Co Durham	3
Oakworth Methodist Church, West Yorkshire	3
OASIS Community Church and Centre, Worksop	1
Old Church, Penallt	1
Ottery St Mary Heritage Society, Devon	1
Ottery St Mary Parish Church, Devon	3
Our Lady Help of Christians Church, Kitts Green, Birmingham	6
Our Lady of the Wayside Catholic School, Solihull	1
Oxford Churches Debt Centre	1
Pakistan Community Centre, Derby	1
Parish Church of St Andrew, Fersfield	1
Parish Church of St Gabriel, Heaton	1
Parish Church of St George the Martyr, Shirley	1
Parish Church of St John and St Petroc, Devoran	2
Parish of Mill End and Heronsgate with West Hyde, Hertfordshire	1
Parish of St Martin in Herne, Kent	4
Parish of St Martin, St Wilfrid and St Alban, Brighton	2
Parish of St Matthew and St Luke, Chadderton	2

CHARITABLE GIVING (UNAUDITED)

	2016 £000
Small grants, up to £6,250 (continued):	
Parochial Church Council of St Thomas the Martyr Church, Overmonnow	5
PCC of Holy Cross Church, Pattishall	1
PCC of Holy Trinity and St Oswald Church, Finningley	5
PCC of the Anglican Parish of Penn Street with Holmer Green, High Wycombe	1
PCC St John's Community Centre, Congleton	4
Play Park Project, Grand Bay-Westfield, Canada	6
Plymouth Methodist Central Hall, Devon	1
Portslade United Reformed Church, Sussex	1
Prees Baptist Church, Shropshire	6
Prestbury Hall Users Group, Cheltenham	1
Prestongrange Parish Church, Prestonpans	2
Priory Church of St Mary and St Blaise, Boxgrove	2
Quiet Waters, Falkirk	1
Ramsgate Christian Fellowship, Kent	1
Rayleigh Methodist Church, Essex	1
RCCG Testimony Assembly, Dagenham	6
REinspired, Earley	1
Restore (York) Ltd, York	1
Riding Mill Village Hall Trust, Northumberland	2
Robert Stewart Memorial URC, Fenham	1
Rosebery Road Methodist Church, Norwich	2
Roundhay Parochial Hall, Leeds	2
Royal Grammar School, High Wycombe	1
Sacred Heart and St Margaret Mary Church, Aston	5
Sacred Heart Catholic Church, Tunstall	3
Saffron Walden Community Church, Essex	2
Saint Barnabas Church, Drefach Felindre	2
Saint Mabon's Church, Llanfabon	1
Saint Matthew's Church, Rowde	1
Saint Olaves with St Giles' Church, York	2
Saint Peter and Saint Paul's Church, Wingrave with Rowsham	1
Saint Stephen and All Martyrs Church, Oldham	4
Sandford Parish Church, Ranelagh	1
Sandholes Presbyterian Church, Northern Ireland	5
Saxtead Parish Church (All Saints), Suffolk	1
Scotter Methodist Chapel, Lincolnshire	3
Scottish Redundant Churches Trust, Edinburgh	1
Shefford Methodist Church, Bedfordshire	2
Siloa Chapel, Aberdare	1
SOS Polonia Trust, Portsmouth	1
Speen Baptist Church, Buckinghamshire	4

CHARITABLE GIVING (UNAUDITED)

	2016 £000
Small grants, up to £6,250 (continued):	
Spiritualized, Kingsbridge	1
Spring Mount Christian Fellowship, Barrow in Furness	2
St Agnes and St Pancras Church, Liverpool	4
St Aidan's Church, Barrow in Furness	4
St Aidan's Church, Skelmanthorpe	2
St Aidan's Church, Southcoates	2
St Alban the Martyr Church, Northampton	1
St Alban's Church, Windy Nook	1
St Albans Primary School, Hornchurch	1
St Andrew with St John the Baptist Church, Crewe	1
St Andrews Church, Hambleton	1
St Andrew's Church, Countesthorpe	3
St Andrew's Church, Great Dunham	3
St Andrew's Church, Great Finborough	1
St Andrew's Church, Greensted juxta Ongar	1
St Andrew's Church, Hagbourne	2
St Andrew's Church, Little Berkhamsted	2
St Andrew's Church, Moulsecoomb	1
St Andrew's Church, Oving	1
St Andrew's Church, Ringstead	1
St Andrew's Church, Roker	3
St Andrew's Church, Shepherdswell	1
St Andrew's Church, Sutcombe	1
St Andrew's Church, Wilmcote	1
St Andrew's Church, Wissett	1
St Andrew's Church, Wiveliscombe	3
St Andrew's Church, Wootton	1
St Andrew's Community Action Group, Belfast	1
St Andrew's Methodist Church, Southwick	3
St Andrew's Parish Church, Dearnley	1
St Andrew's United Reformed Church, Cheltenham	1
St Anne's Church, Eastville	1
St Anne's Church, Soho	2
St Augustine's Church, Penarth	1
St Barnabas Church, Carlisle	4
St Barnabas' Church, Clarksfield	1
St Barnabas Church, Eltham	1
St Bartholomew's Church, Great Harwood	4
St Bartholomew's Church, Otford	3
St Bartholomew's Church, Sproxton	2
St Basils, Birmingham	1

CHARITABLE GIVING (UNAUDITED)

	2016 £000
Small grants, up to £6,250 (continued):	
St Bede with St Clement Church, Toxteth	1
St Benedict Biscop Church, Wombourne	2
St Bernard's Church, Hamstead	1
St Botolph's Church, Colchester	2
St Botolph's Church, Hadstock	2
St Botolph's Church, Heene	3
St Breaca Church, Breage	3
St Catherine's Church (Church of Ireland), Fenagh	1
St Catherine's Church, Draughton	1
St Catherine's Church, Towersey	4
St Catherine's Hospice, Crawley	0
St Cattwg's Church, Port Eynon	1
St Cenau Church, Llangenny	1
St Chad's Centre Trust Company Ltd., Bishop's Tachbrook	5
St Chad's Church, Lichfield	1
St Chad's Church, Rubery	2
St Christopher's Church, Bare	1
St Christopher's Church, Bradford	1
St Christopher's Church, Springfield	1
St Christopher's Church, Willingale	1
St Clement's Church, Openshaw	1
St Columba's Church in the Parish of Christ the King, Wideopen	2
St Creden Church, Sancreed	6
St Cubert Parish Church, Cornwall	4
St Cuthbert's Church, Thetford	4
St Cyngar's Church, Borth y Gest	2
St David's Church, Betws Ammanford	1
St David's Church, Llywel	2
St David's Church, Pontycymer	1
St David's Church, Rhosllanerchrugog	2
St David's Church, Wettenhall	1
St Edith's Church, Monks Kirby	2
St Edmund and St George Church, Hethe	2
St Edmund's Church, Riby	1
St Edmund's Parish Church, Holme Pierrepont	1
St Edward the Confessor Church, Cheddleton	2
St Edward The Confessor Church, Sudbrooke	1
St Edward's Church, Egguckland	1
St Egewlin Church, Scalford	2
St Faith's Church, Newton Longville	1
St Faith's Church, Wilsthorpe	1

CHARITABLE GIVING (UNAUDITED)

	2016 £000
Small grants, up to £6,250 (continued):	
St Francis of Assisi Church, West Wickham	2
St Gabriel's Church, Stanbury	1
St George the Martyr Church, Brentwood	2
St George's Church, Anstey	1
St George's Church, Clun	1
St George's Church, Cwmparc	4
St George's Church, Edgbaston	3
St George's Church, Modbury	5
St George's Church, Rodington	3
St George's Church, Ruishton	1
St George's Church, Stockport	2
St George's Church, Swallowbeck	4
St George's Church, Tredegar	4
St George's Church, Wrotham	5
St George's Parochial Church Council, Newtown	3
St Gerard's Roman Catholic Church, Castle Vale, Birmingham	1
St Germain's Church, Bobbingworth	1
St Giles and St Nicholas Church, Sidmouth	2
St Giles Catholic Church, Cheadle	2
St Giles Church, Aintree	2
St Giles' Church, Blaston	1
St Giles' Church, Goodrich	2
St Giles' Church, Goxhill	1
St Giles Church, Hooke	1
St Giles' Church, Bradford on Tone	2
St Gluvias Community Hall Association, Penryn	1
St Gwenllwyfo's Church, Llanwenllwyfo	1
St Gwinear Parish Church, Cornwall	1
St Helen and the Holy Cross Church, Sheriff Hutton	1
St Helena's Church, Thoroton	2
St Helen's Auckland Church, County Durham	3
St Helens Baptist Church, Merseyside	6
St Helens Christian Life Centre, Merseyside	1
St Helens Church, Brant Broughton	3
St Helen's Church, Kelloe	3
St Helen's Church, Stapleford	3
St James Church, Ab Kettleby	1
St James' Church, Bondleigh	2
St James' Church, Burton Lazars	2
St James' Church, Christleton	1
St James' Church, Harvington	1

CHARITABLE GIVING (UNAUDITED)

	2016 £000
Small grants, up to £6,250 (continued):	
St James' Church, Holywell	1
St James' Church, Little Paxton	1
St James Church, Melsonby	2
St James' Church, Moulton Chapel	3
St James Church, Preston Plucknett	4
St James' Church, Skillington	1
St James' Church, Southbroom	1
St James' Church, Styvechale	2
St James' Church, Westhead	1
St James' Church, Whitechapel	1
St James RC Church, Kinross	1
St James the Great Church, Clayton	1
St James the Great Church, Snitterfield	1
St James the Great Parish Church, Congleton	1
St James the Greater Church, Twycross	2
St John Newland Evangelical Church, Hull	2
St John of Beverley Church, Salton	2
St John the Baptist Church, Okewood Hill	1
St John the Baptist Church, Axbridge	2
St John the Baptist Church, Bamford	1
St John the Baptist Church, Bettisfield	1
St John the Baptist Church, Blisworth	1
St John the Baptist Church, Flitton	1
St John the Baptist Church, Frome	1
St John the Baptist Church, Grove	4
St John the Baptist Church, Guilden Sutton	2
St John the Baptist Church, Holland Road, London	6
St John the Baptist Church, Horrabridge	1
St John the Baptist Church, Kenley	2
St John the Baptist Church, Penmaen	1
St John the Baptist Church, Peterborough	3
St John the Baptist Church, Stanton St John	1
St John the Baptist Church, The Lee, Buckinghamshire	1
St John the Baptist Church, Wateringbury	2
St John the Baptist with Our Lady and St Laurence Church, Thaxted	1
St John the Divine Church, Billericay	1
St John the Divine Church, Frankby with St Nicholas Church, Greasby, Wirral	5
St John the Divine Church, Southrey	1
St John the Evangelist Church, Bexley	1
St John the Evangelist Church, Boscombe	4
St John the Evangelist Church, Dewsbury	3

CHARITABLE GIVING (UNAUDITED)

	2016 £000
Small grants, up to £6,250 (continued):	
St John the Evangelist Church, Farsley	1
St John the Evangelist Church, Ickham	2
St John the Evangelist Church, Staplegrove	3
St John the Evangelist Church, Tolpuddle	2
St John the Evangelist Church, Treslothan	0
St John the Evangelist Episcopal Church, Stranraer	1
St John The Evangelist Roman Catholic Church, Banbury	2
St John's and King's Park Church of Scotland, Dalkeith	4
St John's C of E School, Sandbach Heath	1
St John's Church and Community Hall, Cumnock	3
St John's Church, Ben Rhydding	2
St John's Church, Birkby	1
St John's Church, Carrington	1
St John's Church, Cowgill	1
St John's Church, Drumshanbo	1
St John's Church, Kensal Green, London	1
St John's Church, Littleworth	2
St John's Church, Rhosnesni	1
St John's Church, Weymouth	1
St John's College, Durham	1
St Joseph's Church, Tynan, Co. Armagh	2
St Katharine's Church, Exbury	1
St Katharine's Parish Church, Ickleford	1
St Katharine's, The Danish Church in England, London	6
St Laurence in Thanet Team Ministry, Ramsgate	1
St Laurence's Church, Stanwick	1
St Lawrence and All Saints Church, Steeple	1
St Lawrence Church, Abbots Langley	4
St Lawrence Church, Alton	3
St Lawrence Church, Little Waldingfield	1
St Lawrence Church, Winchester	1
St Lawrence Parish Church, York	2
St Lawrence's Church, Weston-under-Penyard	2
St Leonard's Church, Beoley	2
St Leonard's Church, Cotheridge	1
St Leonard's Church, Deal	1
St Leonard's Church, Denton	1
St Leonard's Church, Pitcombe	2
St Leonard's Church, Sheepstor	2
St Leonard's Parish Church, Hardwick	1
St Llawddog Church, Penboyr	2

CHARITABLE GIVING (UNAUDITED)

	2016 £000
Small grants, up to £6,250 (continued):	
St Luke the Evangelist Church, York	2
St Luke's Church, Carlisle	2
St Luke's Church, Kissingbury	3
St Luke's Methodist Church Centre, Rochester	2
St Margaret of Antioch Church, Hinton Waldrist	5
St Margaret of Scotland Church, Whaddon	2
St Margaret's Church East with West Wellow, Romsey	1
St Margaret's Church, Bagendon	1
St Margaret's Church, Clenchwarton	1
St Margaret's Church, Long Riston	1
St Margaret's Church, Queen Charlton	1
St Margaret's Church, Sea Palling	1
St Margaret's Parish Church of Scotland, Glenrothes	1
St Margaret's Welcome Centre, Hull	1
St Margret of Antioch Church, Cowlinge	1
St Margret of Antioch Church, Thrandeston	1
St Mark's Church, Bestwood Village	1
St Mark's Church, Exeter	1
St Mark's Church, Mansfield	1
St Mark's Church, New Milverton	1
St Mark's Church, Newby	2
St Mark's Church, Sticker	1
St Mark's Church, Stockland Green	1
St Mark's Church, Worle	2
St Mark's School, Bath	1
St Martha's Methodist Church, Tring	2
St Martin in the Delph Church and Centre, Staffordshire	1
St Martin of Tours Parish Church, Middlesbrough	2
St Martin-in-the-Fields Church, London	1
St Martin's Catholic Academy, Stoke Golding	3
St Martin's Church, North Perrott	2
St Martin's Church, Sherwood	1
St Martin's Parish Church, Knowle	1
St Mary and All Saints Church, Bradley	1
St Mary and Holy Trinity Church, Bow	4
St Mary and St Botolph's Church, Hevingham	1
St Mary and St John's Roman Catholic Church, Wolverhampton	1
St Mary and St Laurence Church, Bolsover	4
St Mary and St Peter's Church, Bagillt	2
St Mary Magdalene Church, Barkway	1
St Mary Magdalene Church, Boddington	1

CHARITABLE GIVING (UNAUDITED)

	2016 £000
Small grants, up to £6,250 (continued):	
St Mary Magdalene Church, Debenham	1
St Mary Magdalene Church, Hart Village	1
St Mary Magdalene Church, Leintwardine	1
St Mary Magdalene Church, Tormarton	1
St Mary Magdalene Church, Willen	1
St Mary Magdalene PCC St James Church Hall, Bridgnorth	1
St Mary Magdalene's Church, Enfield	1
St Mary Magdalene's Church, Lillington	2
St Mary Our Lady Church, Sidlesham	6
St Mary Redcliffe Church, Bristol	2
St Mary the Less Church, Chilbolton	1
St Mary The Virgin and All Saints Church, Debden	1
St Mary the Virgin Church, Ashwell	1
St Mary the Virgin Church, Badby	3
St Mary the Virgin Church, Baldock	4
St Mary the Virgin Church, Charminster	2
St Mary the Virgin Church, Childrey	1
St Mary the Virgin Church, Elland	1
St Mary the Virgin Church, Ewelme	1
St Mary the Virgin Church, Farthingstone	1
St Mary the Virgin Church, Fen Ditton	1
St Mary the Virgin Church, Frampton on Severn	1
St Mary the Virgin Church, Gislingham	2
St Mary the Virgin Church, Gissing	3
St Mary the Virgin Church, Great Milton	1
St Mary the Virgin Church, Greetham	1
St Mary the Virgin Church, Higham Ferrers	1
St Mary the Virgin Church, Mold	3
St Mary the Virgin Church, Narford	1
St Mary the Virgin Church, Ovingham	2
St Mary the Virgin Church, Peldon	2
St Mary the Virgin Church, Snettisham	1
St Mary the Virgin Church, Stoneleigh	5
St Mary the Virgin Church, Strensall	3
St Mary the Virgin Church, Strethall	1
St Mary the Virgin Church, Wappenham	1
St Mary the Virgin Church, Ware	3
St Mary the Virgin Church, Westonzoyland	4
St Mary the Virgin Church, Wix	1
St Mary the Virgin Parish Church, Glemsford	1
St Mary-at-Finchley Church, London	3

CHARITABLE GIVING (UNAUDITED)

	2016 £000
Small grants, up to £6,250 (continued):	
St Mary's Church Hall, Selly Oak	2
St Mary's Church in Wales, Brynmawr	2
St Mary's Church, Ardee	1
St Mary's Church, Arlingham	1
St Mary's Church, Ashwell	2
St Mary's Church, Bacton	2
St Mary's Church, Bainton	1
St Mary's Church, Berkeley	1
St Mary's Church, Blyth	1
St Mary's Church, Buckden	1
St Mary's Church, Bury St Edmunds	2
St Mary's Church, Caerhun	1
St Mary's Church, Camberley	2
St Mary's Church, Carew Cheriton	2
St Mary's Church, Chithurst	2
St Mary's Church, Eynesbury	1
St Mary's Church, Flitcham	1
St Mary's Church, Fotherby	1
St Mary's Church, Great Eversden	4
St Mary's Church, Great Sankey	1
St Mary's Church, Grendon	1
St Mary's Church, Hampstead Norreys	2
St Mary's Church, Hampton	1
St Mary's Church, Harkstead	2
St Mary's Church, Herbrandston	2
St Mary's Church, Hook with Warsash	1
St Mary's Church, Johnstown	1
St Mary's Church, Kings Pyon, Herefordshire	3
St Mary's Church, Liss	5
St Mary's Church, Llanvair Discoed	2
St Mary's Church, Old Malton	2
St Mary's Church, Oldberrow	1
St Mary's Church, Oldham	2
St Mary's Church, Playford	1
St Mary's Church, Portskewett Heritage Centre, Monmouthshire	2
St Mary's Church, Radcliffe on Trent	2
St Mary's Church, Rawtenstall	1
St Mary's Church, Rhuddlan	1
St Mary's Church, Richmond	2
St Mary's Church, Ringstead	1
St Mary's Church, Salcott Virley	1

CHARITABLE GIVING (UNAUDITED)

	2016 £000
Small grants, up to £6,250 (continued):	
St Mary's Church, Selborne	1
St Mary's Church, Shenley	1
St Mary's Church, Shinfield	1
St Mary's Church, Snead	1
St Mary's Church, Sompting	1
St Mary's Church, Southampton	1
St Mary's Church, Staunton-on-Wye	3
St Mary's Church, Stratford St Mary	4
St Mary's Church, Stretton	1
St Mary's Church, Sullington	1
St Mary's Church, Swaffham Bulbeck	1
St Mary's Church, Tenbury Wells	2
St Mary's Church, Thakeham	1
St Mary's Church, Tydd St Mary	1
St Mary's Church, Walsgrave on Sowe	1
St Mary's Church, Weeford	1
St Mary's Church, Weymouth	2
St Mary's Church, Whitchurch	1
St Mary's Church, Willesden	3
St Mary's Church, Wooler	2
St Mary's Church, Wycliffe	1
St Mary's Parish Church, Slough	3
St Mary's Priory Church, Monmouth	1
St Matthew's Church, Donnington Wood	2
St Matthew's Church, Buckley	1
St Matthew's Church, Lee	1
St Matthew's Church, Normanton on Trent	1
St Matthew's Church, Worthing	1
St Mawgan-in-Meneage Parish Church, Mawgan	5
St Meilyr's Church, Llys-y-Fran	1
St Mellans, Agaderg Parish Church, Northern Ireland	1
St Melyd's Church, Meliden	1
St Michael and All Angels Church, Badminton	1
St Michael and All Angels Church, Bude Haven	1
St Michael and All Angels Church, Cockerham	1
St Michael and All Angels Church, Cookley	1
St Michael and All Angels Church, Dewsall	1
St Michael and All Angels Church, Edwin Ralph	1
St Michael and All Angels Church, Felton	1
St Michael and All Angels Church, Ingoldisthorpe	1
St Michael and All Angels Church, Middleton by Youlgreave	1

CHARITABLE GIVING (UNAUDITED)

	2016 £000
Small grants, up to £6,250 (continued):	
St Michael and All Angels Church, Middlewich	1
St Michael and All Angels Church, Mitcheldean	1
St Michael the Archangel Church, Dundry	6
St Michael the Archangel Church, Letchworth	1
St Michaels and All Angels Church, Aberystwyth	3
St Michael's and All Angels Church, Brampton Abbots	4
St Michael's Church, Betws yn Rhos	1
St Michael's Church, Bray	2
St Michael's Church, Budbrooke	4
St Michael's Church, Burnett	1
St Michael's Church, Cornhill	1
St Michael's Church, Cwmafan	1
St Michael's Church, Doddiscombsleigh	1
St Michael's Church, Little Coates, Grimsby	2
St Michael's Church, Stoke Gifford	1
St Michael's Church, Wincle	2
St Michael's Hospice, St Leonards on Sea	1
St Milburga's Church, Stoke St Milborough	2
St Mildred's Church, Addiscombe	4
St Mildred's Church, Whippingham	2
St Nectan's Church, Welcombe	2
St Neot Church, Cornwall	3
St Nicholas Church, Alcester	3
St Nicholas Church, Allington	1
St Nicholas Church, Ashchurch	1
St Nicholas' Church, Blundellsands	1
St Nicholas Church, Durham	1
St Nicholas' Church, Kelvedon Hatch	1
St Nicholas Church, Laindon with Dunton	4
St Nicholas' Church, Marston	1
St Nicholas' Church, Rawreth	1
St Nicholas Church, Stretton	1
St Nicholas' Church, Sutton	1
St Nicholas' Church, Ulcombe	1
St Nicolas' Church, Shoreham-by-Sea	1
St Oswald's Church, East Stoke	1
St Oswald's Church, Filey	1
St Oswald's Church, Pontypool	1
St Owen's Church, Bromham	5
St Patrick Roman Catholic Church, Oldham	2
St Patrick's Roman Catholic Church, Crossmaglen	4

CHARITABLE GIVING (UNAUDITED)

	2016 £000
Small grants, up to £6,250 (continued):	
St Patrick's Roman Catholic Church, Winson Green, Birmingham	4
St Paul's Church, Burradon	2
St Paul's Church, Chudleigh Knighton	1
St Paul's Church, Derby	3
St Paul's Church, Grange-over-Sands	5
St Paul's Church, Hainault	4
St Paul's Church, Shepley	1
St Paul's Church, Spennymoor	1
St Paul's Church, Woodford Bridge	1
St Pauls Parish Church, York	1
St Peter and Paul's Church, Caistor	4
St Peter and Paul's Church, Mautby	1
St Peter and St James C of E Parish Church, Halwill Town	4
St Peter and St Paul Church, Ewhurst	1
St Peter and St Paul's Church, Belton, Grantham	2
St Peter and St Paul's Church, Great Bowden	2
St Peter and St Paul's Church, Horndon on the Hill	1
St Peter and St Pauls Church, Hucknall	1
St Peter and St Paul's Church, Kedington	1
St Peter and St Paul's Church, Little (Bardfield) Saling	1
St Peter and St Paul's Church, Long Compton	1
St Peter and St Paul's Church, Warsop	1
St Peter and St Paul's Church, Wymering	1
St Peter and St Paul's Parish Church, Great Somerford	4
St Peter and St Paul's Parish Church, Swalcliffe	1
St Peter's Church and St Peter's Church Hall, Bishop's Waltham	1
St Peter's Church in Holderness, East Yorkshire	1
St Peter's Church, Bexleyheath	1
St Peter's Church, Bridge	2
St Peter's Church, Brighton	6
St Peter's Church, Combwich	2
St Peter's Church, Copt Oak	1
St Peter's Church, Cransford	1
St Peter's Church, Ealing	4
St Peter's Church, Elmsett	2
St Peter's Church, Forsbrook	1
St Peter's Church, Hutton Cranswick	2
St Peter's Church, Ilfracombe	5
St Peter's Church, Neatishead	1
St Peter's Church, Newnham	2
St Peter's Church, Norton	2

CHARITABLE GIVING (UNAUDITED)

	2016 £000
Small grants, up to £6,250 (continued):	
St Peter's Church, Oundle	1
St Peter's Church, Pavenham	1
St Peter's Church, Seaview	2
St Peter's Church, Sible Hedingham	2
St Peter's Church, Sowerby	1
St Peter's Church, Stourton	3
St Peter's Church, Windrush	2
St Peter's Church, Wormleighton	3
St Peter's Collegiate Church, Wolverhampton	4
St Peter's Scottish Episcopal Church, Linlithgow	2
St Philemon's Church, Toxteth	1
St Philip and St James Church, Alderley Edge	5
St Philip's Church, Bournemouth	3
St Piran's Cross Multi-Academy Trust, Truro	2
St Quiricus and St Julietta Church, Tickenham	2
St Raphael's Church, Huccaby	1
St Richard's Church, Heathfield	1
St Saviour and St Peter's Church, Eastbourne	4
St Saviour's Church, Bamber Bridge	2
St Saviour's Church, Larkhall	4
St Seraphim's Trust, Little Walsingham	4
St Stephens Church Lympne Bellringers Society, Kent	1
St Stephen's Church Steeton with Eastburn, West Yorkshire	2
St Stephens Church, Astley	2
St Stephen's Church, Lympne	2
St Stephen's Church, West Bowling	5
St Stephen's Church, Winsham	2
St Swithun upon Kingsgate Church, Winchester	2
St Teilo's Church, Llantilio Pertholey	3
St Theodore's Church, Cwmfelinfach	1
St Thomas a Becket Church, Box	2
St Thomas a Becket Church, Ramsey	2
St Thomas Beckett Church, Tugby	2
St Thomas Church, Bradley	1
St Thomas Church, Bradwell-on-Sea	2
St Thomas' Church, Kirkholt	1
St Thomas Church, Norwich	1
St Thomas' Church, Stockport	1
St Thomas' Church, Stopsley Village	1
St Thomas Church, Swansea	1
St Thomas' Church, Wednesfield	1

CHARITABLE GIVING (UNAUDITED)

	2016 £000
Small grants, up to £6,250 (continued):	
St Thomas of Canterbury Church, Hullbridge	1
St Thomas of Canterbury Roman Catholic Church, Sevenoaks	5
St Thomas the Apostle Church, Chevithorne	1
St Thomas the Martyr Church, Winchelsea	1
St Tysilio's Church, Sellack	2
St Vedast's Church, Tathwell	1
St Veep Parish Church, Lostwithiel	2
St Vincent's Church, Newnham	1
St Werburgh's Church, Kingsley	2
St Wilfrid's Church, Calverley	2
St Wilfrid's Church, Harrogate	5
St Wilfrid's Church, North Muskham	2
St Winifreds Church, Penrhiwceiber	1
St Wystan's Church, Repton	1
Stapleford Methodist Church, Nottinghamshire	1
Step, St Albans	1
Stoke Gabriel Baptist Church, Devon	1
Stone Methodist Chapel, Buckinghamshire	1
Strand Church, Dawlish	1
Street United Reformed Church, Somerset	3
Swaffham Methodist Church, Norfolk	4
Tarporley Baptist and Methodist Church, Cheshire	2
Temple Hill Baptist Church, Dartford	1
The Albion Academy, Salford	0
The Anglican Church of St Andrew, Chew Stoke	2
The Bevern Trust, Barcombe	1
The Bridge Church St Ives, Cambridgeshire	1
The Church of St Mary the Virgin, Nether Broughton	2
The Church of St Peter, Stainforth	1
The Church of the Holy Rood, Wool	1
The CoED Foundation, Birmingham	1
The Community Church in Southport	2
The Diocese of Argyll	4
The Diocese of Moray	4
The Edgemoor Group of Parishes, Devon	0
The Episcopal Church of St James the Great, Stonehaven	1
The Friends of Saint Mary's Church, Uffington	1
The Harrogate Hub, North Yorkshire	2

CHARITABLE GIVING (UNAUDITED)

	2016 £000
Small grants, up to £6,250 (continued):	
The Hill Church, Swansea	2
The Leam Methodist Church, Gateshead	1
The Liverpool Virginia West Africa Youth Pilgrimage, Huyton	3
The London Institute for Contemporary Christianity, London	2
The Luton and Dunstable Hospital Charitable Trust, Bedfordshire	1
The Message Trust (Eden Bus), Manchester	2
The Methodist Church, Ryde, Isle of Wight	1
The Norfolk Hospice, Hillington	1
The Oxford House in Bethnal Green, London	1
The Oxford Pastorate, Oxford	2
The Parish Church of St Augustine, Rumney	4
The Parish Church of St Denys, Sleaford	1
The Parochial Church Council of Deeping St. James, Lincolnshire	2
The Parochial Church Council of Gimingham, Norfolk	1
The Parochial Church Council of The Ecclesiastical Parish of Newchurch, Culcheth	1
The Parochial Church Council of the Ecclesiastical Parish of St John, Bowling, Bradford	6
The Parochial Church Council of the Ecclesiastical Parish of St Thomas, Garstang	3
The Point Church, Burgess Hill	1
The Prince and Princess of Wales Hospice, Glasgow	2
The Priory Church of St Mary and St Cuthbert, Bolton Abbey	2
The Priory Church of St Mary, Lancaster	3
The Priory Church of St Peter and St Paul, Leominster	1
The Rainbow Centre, Scarborough	1
The Salvation Army, Croydon	1
The Select Vestry St. John's Church, Kiltteevogue Parish, Ireland	1
The Society of the Sacred Cross, Lydart	2
The Town Estate, Barrow	2
The Vine Church, Sheffield	1
The Vine Trust of St Mary's Laisterdyke, West Yorkshire	1
The Vine, Maidstone	2
The Wave Youth and Children's Ministry, Swanage	4
The Wynd Centre, Paisley	1
Third Space Ministries, Morden	1
Thornton, Bagworth and Stanton under Bardon PCC, Leicestershire	1
Thundersley Methodist Church, Essex	2
Timberland Methodist Church, Lincolnshire	2
Timsbury Methodist Church, Bath	1
Tiree Parish Church of Scotland	2
Transformations, Leeds	1
Transforming Notts Together, Southwell	1
Trentham Methodist Church, Staffordshire	3

CHARITABLE GIVING (UNAUDITED)

	2016 £000
Small grants, up to £6,250 (continued):	
Trinity Baptist Church, Derby	1
Trinity Methodist Church, Middlesbrough	3
Trinity United Reformed/Methodist Church, Sutton	2
Trustees of the Church of St John The Evangelist, Dublin	1
Tyburn Convent, London	2
Underwood Baptist Free Community Church, Llanmartin	2
Upper Caldecote Methodist Church, Bedfordshire	1
Upton Noble Church of England VC Primary School, Somerset	1
Urban Pursuit CIC, Bristol	1
Ushaw College, Durham	1
Via Wings, Dromore	2
Victoria Stafford Road Methodist Church, Sheffield	1
Walmer Parish Churches, Kent	1
Waveney Foodbank, Suffolk	1
Waverton Evangelical Fellowship, Cheshire	4
Wellow Church Schoolroom, Nottinghamshire	2
St George's Church, Wembdon	5
Wesley Methodist Church, Chester	6
Westhoughton Methodist Church, Lancashire	1
Whiteshill Evangelical Church, Bristol	2
Whitfield Parochial Church, Glossop	4
Widden Primary School, Gloucester	1
William Temple Parish Church, Wythenshawe	2
Willington Methodist Church, Bedford	2
Willowfield Parish Community Association, Belfast	4
Winterley Methodist Church and Community Centre, Cheshire	2
Wirral Foodbank, Birkenhead	1
Woking and Sam Beare Hospices, Surrey	1
Word of Life Church, Grove Park, London	2
Wroughton Youth Adventure Charity, Wiltshire	1
Wycliffe United Reformed Church, Leicester	1
Wylam Methodist Church, Northumberland	4
Yarcombe Baptist Church, Devon	2
Ykids, Bootle	4
YMCA, Birmingham	1

CHARITABLE GIVING (UNAUDITED)

During the year, the charity made the following special and flagship project grants:

	2016 £000
Special and Flagship Projects:	
Anglican Consultative Council, London	7
Archbishops' Council, London	40
Association of Church Accountants and Treasurers, London	30
Association of English Cathedrals, London	50
Churches Conservation Trust, London	129
Church in Wales, Cardiff	39
Church of England Ministerial Experience Scheme, London	100
Church Urban Fund, London	50
Dublin and Glendalough Dioceses, Dublin	30
Evangelical Alliance, London	90
Historic Religious Buildings, London	12
Holy Trinity Brompton, London	50
Lead, Edinburgh	50
Llandaff Diocesan Board of Finance, Bridgend	60
Norwich Cathedral	40
Release Prison Partnership Ltd, Dublin	60
St John's College, Durham	100
The Students Exploring Marriage Trust, Fareham	60
The Big Church Day Out, Littlehampton	60
The Friends of the Archbishop's Anglican Communion Fund (FACF), London	50
The Queen Elizabeth Scholarship Trust, London	18
The Representative Body of the Church of Ireland (RCB), Dublin	90
The Society of Mary and Martha, Exeter	100

During the year, the charity made the following Methodist Grant-Giving Committee grants:

	2016 £000
Methodist Grant-Giving Committee grants:	
Barlow and Cutthorpe Methodist Church, Derbyshire	2
Bilton Area Methodist Church, Harrogate	20
Bishop Street Methodist Church, Leicester	1
Burn Park Methodist Church, Sunderland	1
Dundrum Methodist Church, Dublin	3
Garston Park Church, Liverpool	2
Hesleden Methodist Church, Hartlepool	1
Longton Central Hall, Stoke on Trent	3
Nanstallon Methodist Church, Bodmin	1
Old Roan Methodist Church, Liverpool	1
Perth Methodist Church	3
Pickmere Methodist Church, Knutsford	3
Pilling Methodist Church, Preston	3
Plymouth Methodist Central Hall	3
Queen Victoria Seamen's Rest (QVSR), London	25
South Wigston Methodist Church, Leicester	1
St Luke's Methodist Church Centre, Rochester	3
Syke Methodist Church, Rochdale	4
Trinity URC and Methodist Church, Great Harwood	50
Upper Caldecote Methodist Church, Biggleswade	5
Wath Methodist Chapel, Harrogate	1